



Let's Recycle Better, Together.

HARMONIZATION: BRINGING CONSISTENCY TO RECYCLING PROGRAMS

TUESDAY JULY 15, 2025



Today's Panelists



Jill Martin

Director of Community Programs

The Recycling Partnership



Cassidy Campbell

Program Manager

**North Central Texas
Council of Governments**



Jill Aki Hrycyk

Senior Planner

Oregon Metro

Join the Discussion

From your toolbar:

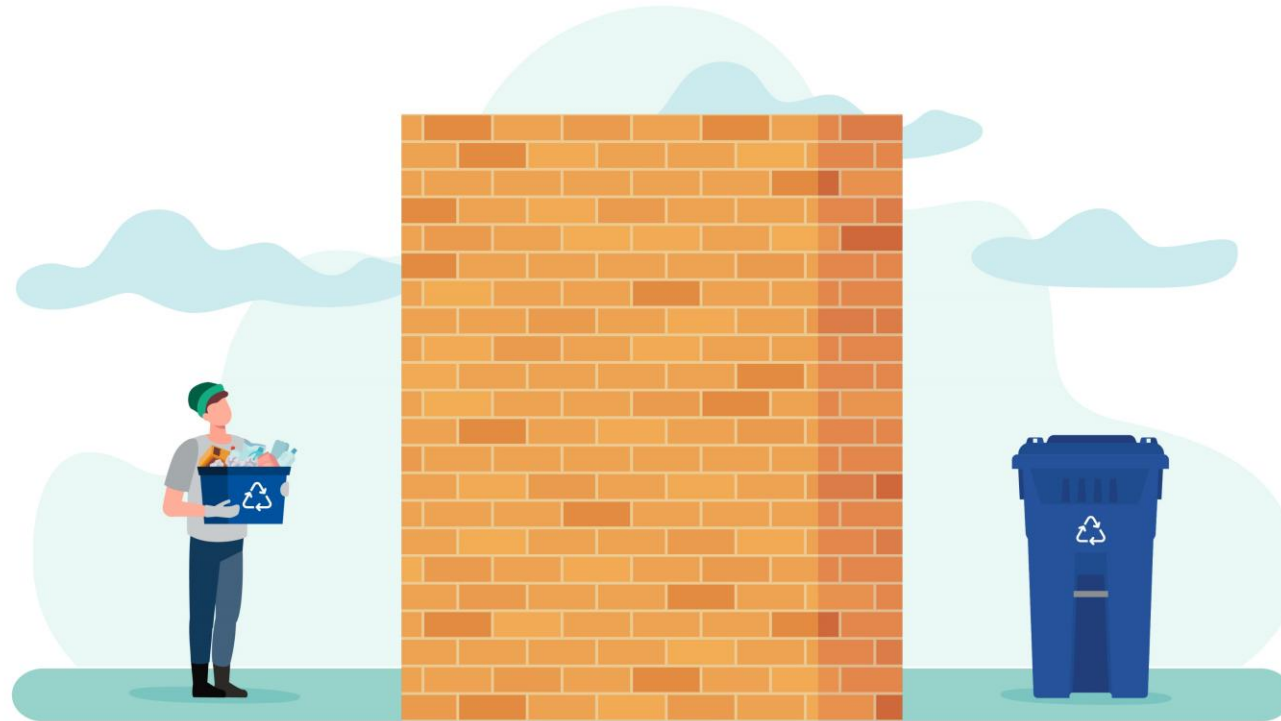


Share your experience
& opinions

Look for links
to resources

Type direct questions
for panelists

Inconsistency is a Barrier to Recycling



Recycling's Brand(s)



Inconsistent Messaging Causes Confusion

**ALLOWED
IN THIS CONTAINER**

ALL RECYCLABLE ITEMS MUST BE CLEAN, FLATTEN OR NEST BOXES WHEN POSSIBLE.

**NOT ALLOWED
IN THIS CONTAINER**

PLASTIC RESIN IDENTIFICATION CODES						
PETE	HDPE	PVC	LDPE	PP	PS	OTHER
Polyethylene Terephthalate	High Density Polyethylene	Polyvinyl Chloride	Low Density Polyethylene	Polypropylene	Polystyrene	Other

SINGLE STREAM RECYCLING

ALLOWED: Paper, Newspapers, Magazines, Paperboard, Paper Bags, Glass Bottles*, Milk Cartons*, Plastics #1-7*, Aluminum*, Tin/Steel Cans*

DO NOT INCLUDE: TISSUES, LINENS, STYROFOAM, FOOD WASTE, PIZZA BOXES, Plastic Straws, Tissues, Plastic Utensils, Candy Wrappers, Pizza Boxes, Paper Towels, Food Waste.

*Rinse containers before recycling

DON'T TANGLE OR CONTAMINATE RECYCLE MORE FOR A GREENER STATE

<p>PLASTIC Bottles, tubs, jugs and jars</p> <p>No pumps Empty and rinse</p>	<p>METAL All cans</p> <p>Empty and rinse</p>
<p>GLASS Bottles and jars</p> <p>Empty and rinse</p>	<p>PAPER Paper, cartons and cardboard</p> <p>Flatten cardboard</p>

MIX ALL RECYCLABLES

ALLOWED: Glass Jars and Bottles, Aluminum Cans, Foil and Pie Tins, Tin or Steel Cans, Plastic Bottles and Containers 1-7.

NO: Food Waste, Yard Waste, Motor Oil Containers, Ceramics or Dishes, Light Bulbs, Window Glass or Mirrors, Packaging Peanuts or Bubble Wrap, Electronics, Plastic Bags and Block Foam Packaging, Syringes or Medical Waste.

RECYCLED: Paper Bags, Cereal Boxes, Paper Towel Rolls and Cardboard, Telephone Books, Junk Mail, Magazines, Catalogs, Newspaper and Inserts, Office Paper and File Folders.

REMEMINDER: Carts must be placed with arrows on lid facing the street. Do not block cart or place within 3 feet of any obstruction.

CITY OF JANEVILLE





Next Panelists

Jill Martin

Director of Community Programs

The Recycling Partnership



Harmonized Recycling

Simplifying the system and fostering interlocal collaboration for increased capture

Tuesday, July 15, 2025



**The Recycling
Partnership**
Solving for Circularity



Who We Are

The Recycling Partnership is a team of experts, practitioners, and thought leaders with real-world experience who are delivering on our mission of building a better recycling system.

Our Vision

A future where the burden of waste has been transformed into a beneficial resource.

Our Purpose

Protecting natural resources, building more sustainable communities, and ensuring that everyone who wants to recycle can recycle is at the heart of everything that we do.

Our Mission

Our mission is to build a better recycling system, one that delivers the economic and environmental benefits our communities and the hundreds of thousands of people who work throughout the recycling industry deserve.

Impact to Date ⚡

1 Billion Pounds of NEW Recyclables Captured

1.4 Million Metric Tons GHG Avoidance



*Cumulative Metrics 2015 – November 2024

Together, We're Building a Better Recycling System





Why Are Only 24% of Recyclables Captured in Households?



People support recycling, but they are confused and frustrated by inconsistent instructions



Less than half believe their recyclables are made into new things.



75% of people don't recall receiving communication about their recycling program.



In-home setups are insufficient and lacking point-of-decision supports.

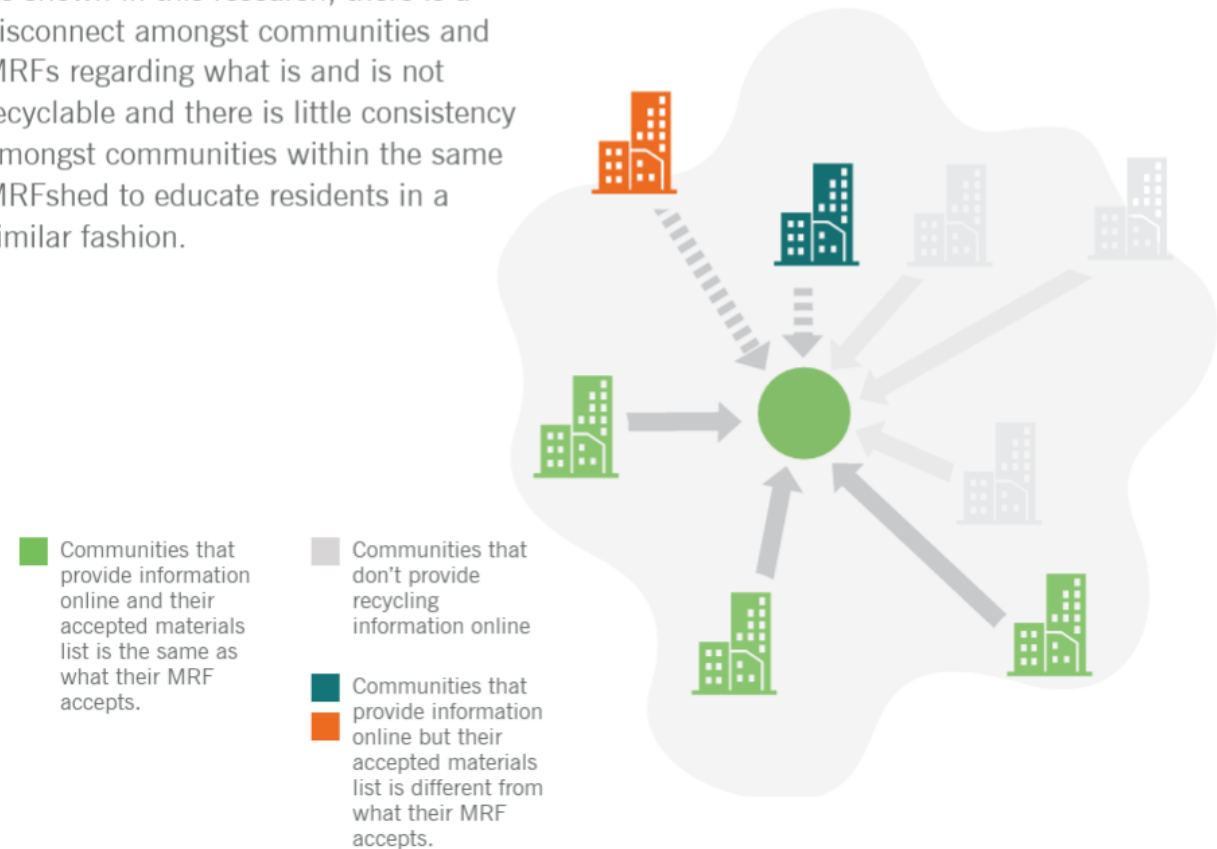
Result: Higher contamination rates
Lower overall capture

What Is Harmonization?

Harmonizing means bringing into consonance or accord.

- **Aligning all stakeholders**—MRFs, municipalities, educators—around **shared messaging**
- Coordinating guidelines so residents see the **same instructions at home, work, and in public**
- Not identical programs, but one unified narrative

As shown in this research, there is a disconnect amongst communities and MRFs regarding what is and is not recyclable and there is little consistency amongst communities within the same MRFshed to educate residents in a similar fashion.



System-Wide Harmonization: Five Key Elements



- 1 All packaging needs to be designed for recyclability.
- 2 All households need uniform curbside/drop-off access to recycling
- 3 Residents need to fully engage in recycling.
- 4 Recycling facilities need to effectively process the material.
- 5 Recycling facilities need sufficient end markets.

Source: [The Partnership's State of Recycling Report](#)

Communities can achieve harmonization by:

- **Establishing consistent material lists** and terminology by MRFshed
- **Collaborating** to design outreach with consistent colors, imagery and **branding**
- **Regional Outreach Campaigns**
- **Leveraging contracts & regulations**
- **Extended Producer Responsibility (EPR)**

Benefits

- ➔ **Reduces contamination rate**
- ➔ **Boosts curbside participation and material capture**
- ➔ **Builds public trust and reduces program costs**

Case Study

Peoria, AZ

2021 study tested different outreach strategies on 4 collection routes

Before:

Recycling = Brown
Trash = Tan

After:

Recycling = Blue lid +
education flyer

Result:

20.3% lower contamination



Case Study

Fort Collins, CO

New 2024 residential curbside hauling contract requires **standardized cart colors**.

Recycling = blue

Compost = green

Trash = grey

Simplified, regionally consistent recycling guidelines

Statewide Momentum

Source: The Recycling Partnership. [Case Study: Fort Collins, Colorado](#). June 2025.

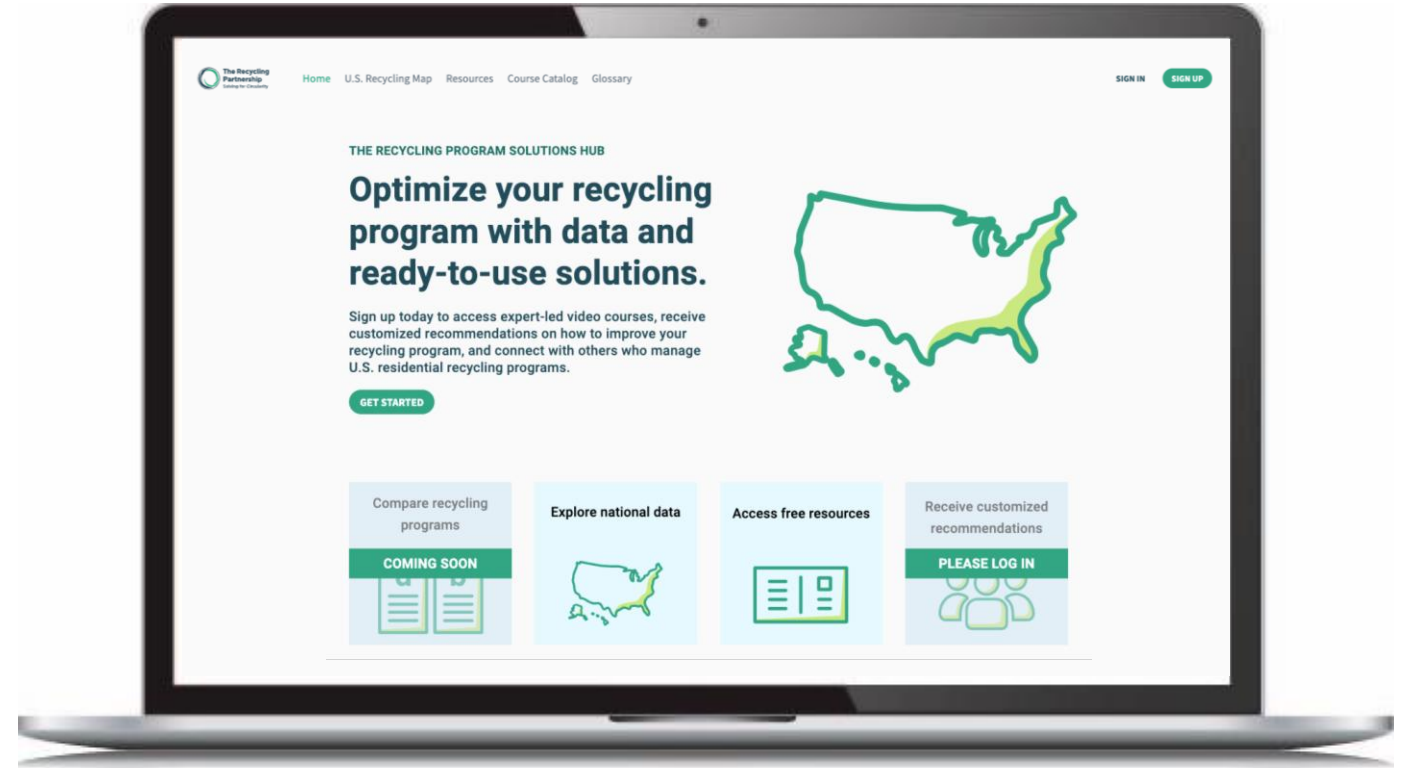


The Recycling Program Solutions Hub

Effective and Innovative Solutions to Increase Material In the Cart

An open-access, free tool for recycling program leaders to **access, track & verify** critical recycling program data.

Focused on **connectivity and actionable suggestions**, the Hub offers a wealth of resources and support for recycling program leaders. It facilitates a **two-way information exchange**, strengthening the system.



Key Features

Interactive Map

Custom Recommendations

Learning Hub & Resources

Peer-to-Peer Networking



www.recyclingpartnership.org/recycling-program-solutions

Thank you!



www.recyclingpartnership.org/grants



**The Recycling
Partnership**
Solving for Circularity

We mobilize people, data, and solutions across the value chain to reduce waste and our impact on the environment while also unlocking economic benefits.

Live Poll #1

Webinar poll | 1 question | 83 of 137 (60%) participated

1. Which, if any, steps has your organization taken to harmonize recycling with neighboring programs? (Check all that apply) (Multiple Choice) *

83/83 (100%) answered



Next Panelists

Cassidy Campbell

Program Manager

Dept. of Environment & Development

**North Central Texas
Council of Governments**



Harmonization: Bringing Consistency to Recycling Programs

DO YOU **KNOW** WHAT TO THROW?

Regional Recycling Survey
& Education Campaign

Cassidy Campbell, Program Manager
Environment & Development Department
North Central Texas Council of Governments



What is the North Central Texas Council of Governments?

- Voluntary association of local governments
- Assists local governments in:
 - Planning for common needs
 - Cooperating for mutual benefit
 - Recognizing regional opportunities
 - Resolving regional problems
 - Making joint decisions



North Central Texas Region

16 Counties

169 Cities

53 School and Special Districts

Regional Materials Management Program

- Funded through the Texas Commission on Environmental Quality (TCEQ)
- The Resource Conservation Council directs the funding and provides guidance and support
- Funding covers pass-through grants, regional projects, technical studies, outreach activities, and more



Regional Residential Recycling Challenges

- Low Participation Rates; High Contamination Rates
- Goal: Educate residents how to “recycle **more** and recycle **right**”.
- Solution: Develop a simple and consistent message to amplify across the region so that residents “**know what to throw**”.
- In 2018, the RCC initially allocated ~\$660,000 toward **The Regional Recycling Survey and Education Campaign**



Campaign Development Process



Municipal Survey



Waste Characterization

MRF SURVEY: Acceptable Materials Worksheet

MRF/REP _____ DATE _____
CITY/REP _____

Use this document to identify and address acceptable and problematic materials, inform front line staff, and create materials to educate residents to clean-up the inbound recycling stream. It is recommended that the **local program representative and MRF operator/plant manager** complete this worksheet together every 6 months and during the creation or renewal of processing contracts. We encourage this document be used in the RFP process as well.

Mark whether each item is: **Yes: Acceptable**
No: Detrimental or **No: Non-detrimental** or **No: But recycled**
Non-detrimental items may or may not go to market but do not cause any major problems.
Detrimental items can shut down or damage equipment, harm employees, and/or substantially degrade the value of materials.
But recycled items are not wanted in the stream but will be pulled off the sorting line to be recycled if markets exist.

				PAPER PRODUCT	
YES: Acceptable	NO: Detrimental	NO: Non-detrimental	NO: But recycled		
<input type="radio"/>	<input type="radio"/>	<input type="radio"/>	<input type="radio"/>	Cartons (gable top e.g. milk and orange juice, and aseptic e.g. juice boxes and soup)	
<input type="radio"/>	<input type="radio"/>	<input type="radio"/>	<input type="radio"/>	Cold Cups (e.g. paper fountain drink cup)	
<input type="radio"/>	<input type="radio"/>	<input type="radio"/>	<input type="radio"/>	Hard Cover Books	
<input type="radio"/>	<input type="radio"/>	<input type="radio"/>	<input type="radio"/>	Hot Cups (e.g. coffee cup)	
<input type="radio"/>	<input type="radio"/>	<input type="radio"/>	<input type="radio"/>	Ice Cream Container	
<input type="radio"/>	<input type="radio"/>	<input type="radio"/>	<input type="radio"/>		
<input type="radio"/>	<input type="radio"/>	<input type="radio"/>	<input type="radio"/>		
<input type="radio"/>	<input type="radio"/>	<input type="radio"/>	<input type="radio"/>		
<input type="radio"/>	<input type="radio"/>	<input type="radio"/>	<input type="radio"/>		

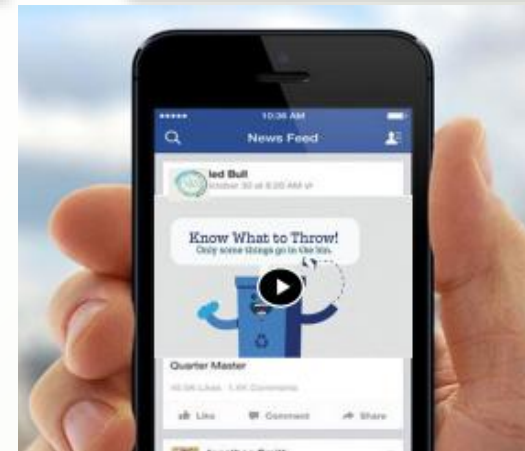
MRF Survey



Regional Workshops



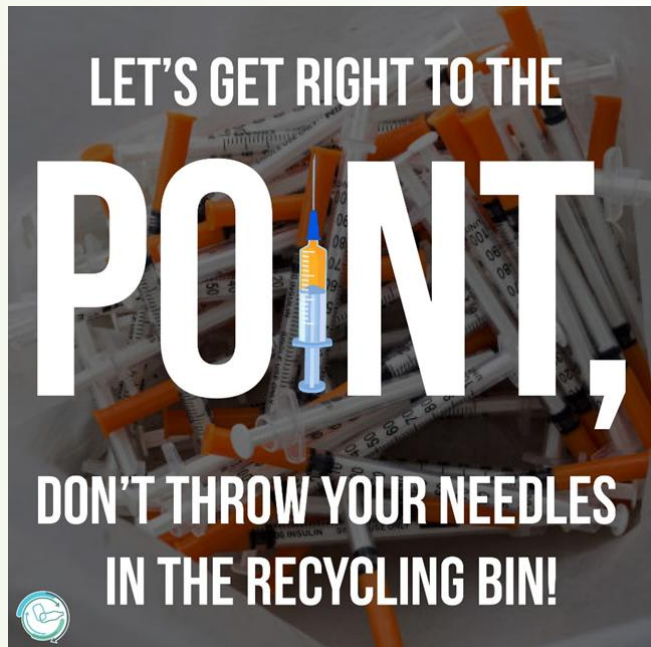
Campaign Development



Campaign Implementation

Know What To Throw

- Focus on contamination
- Clear and consistent regional messaging
- Promotional activities lead by NCTCOG and amplified by participating entities



Valuable Material Disposed

- Estimated **\$122 million** potentially recyclable material disposed annually
- **Recyclable plastics and metals** represent highest value material with lowest capture rates in region
- Developed Acceptable Materials List for regional consistency and clarity



Top Prohibited Materials

- Tanglers
- Plastic Bags
- Propane Tanks
- Food/Yard Waste
- Needles/Medical Equipment




© Can Stock Photo - csp2316236



Know What To Throw

- TimeToRecycle Website
- Quiz



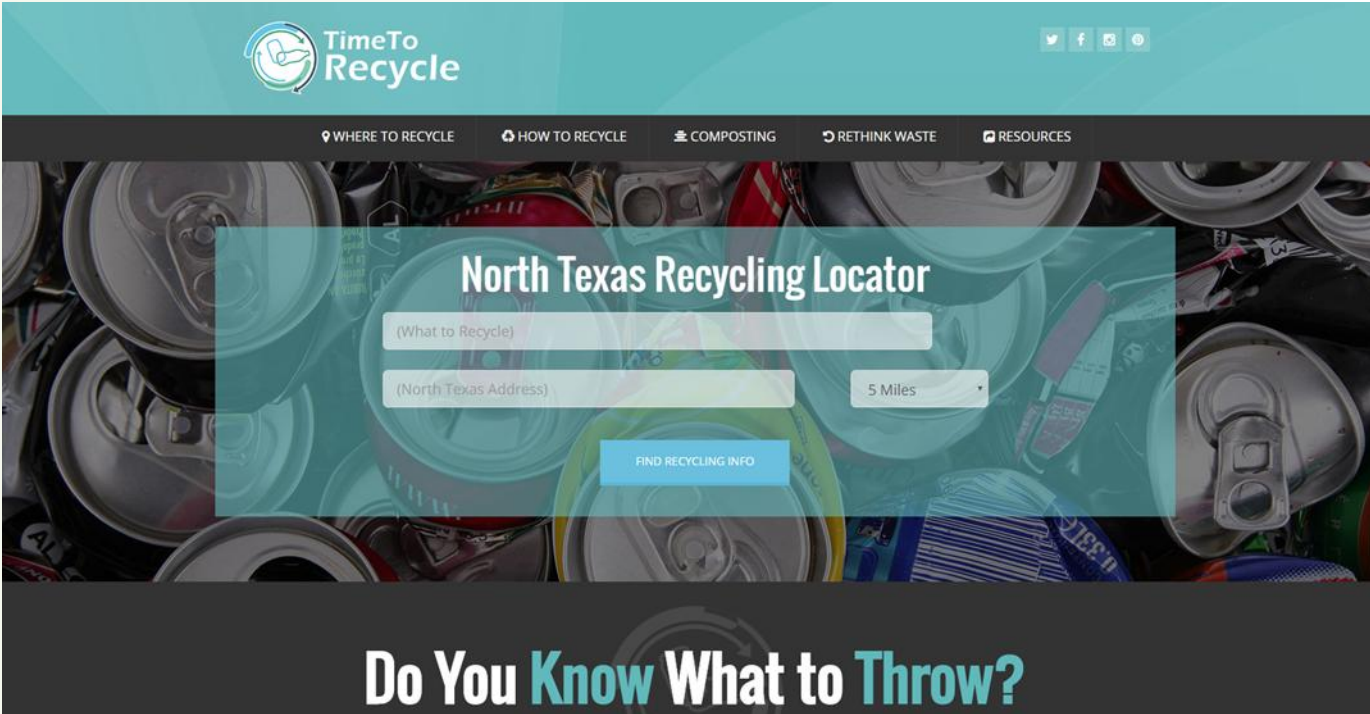
DO YOU **KNOW** WHAT TO THROW?

RECYCLE? DONATE? TRASH?

Do you actually know what everyday items are recyclable?

Start

Test your Recycling IQ



TimeToRecycle

WHERE TO RECYCLE HOW TO RECYCLE COMPOSTING RETHINK WASTE RESOURCES

North Texas Recycling Locator

(What to Recycle)

(North Texas Address) 5 Miles

FIND RECYCLING INFO

Do You Know What to Throw?



Know What To Throw

- Paid Promotional Activities
- Customizable Templates
- Coordinated Launch Topics



PLEASE LEAVE THESE ITEMS OUT!



No Plastic Bags
(take back to retail)
No coloque bolsas de tiendas
(devuélvalas a las tiendas)



No Food or Liquid
(empty all containers)
No coloque comida ni líquido
(vacíe todos los recipientes)



No Hoses, Wires or Chains
No coloque materiales que
puedan enredarse, cables,
mangueras o cadenas



No Batteries
No coloque baterías
in recicle o basura
(devuélvalas a las tiendas)



No Clothing
(drop off only)
No coloque ropa
(donar)



No To-go Containers
No coloque contenedores para
llevar comida

For full list of what to recycle, visit
www.arlingtontx.gov/recycle
or call 817-459-6777

Funded through a grant from NCTCOG and the TCEQ



DO YOU KNOW WHAT TO THROW?
For recycling to thrive, we need to **recycle the YES things** and **keep the NO things out.**

DID YOU KNOW?

YES! ALWAYS RECYCLE

- BOTTLES, CANS** (EMPTY, CLEAN)
- BOXES** (FLAT, DRY)
- PAPER** (DRY)

LEAVE THESE OUT OF RECYCLING!

- NO BAGS** (TAKE BACK TO STORE)
- NO BATTERIES** (RETURN TO RETAIL)
- NO TANGLED** (DONATE or TRASH)

For full list of what to recycle, visit
www.garland.tx.us
or call 972-205-2000

TEST YOUR RECYCLING IQ
TimeToRecycle.com
Funded through a grant from NCTCOG and the TCEQ

KEEP PLASTIC BAGS OUT.

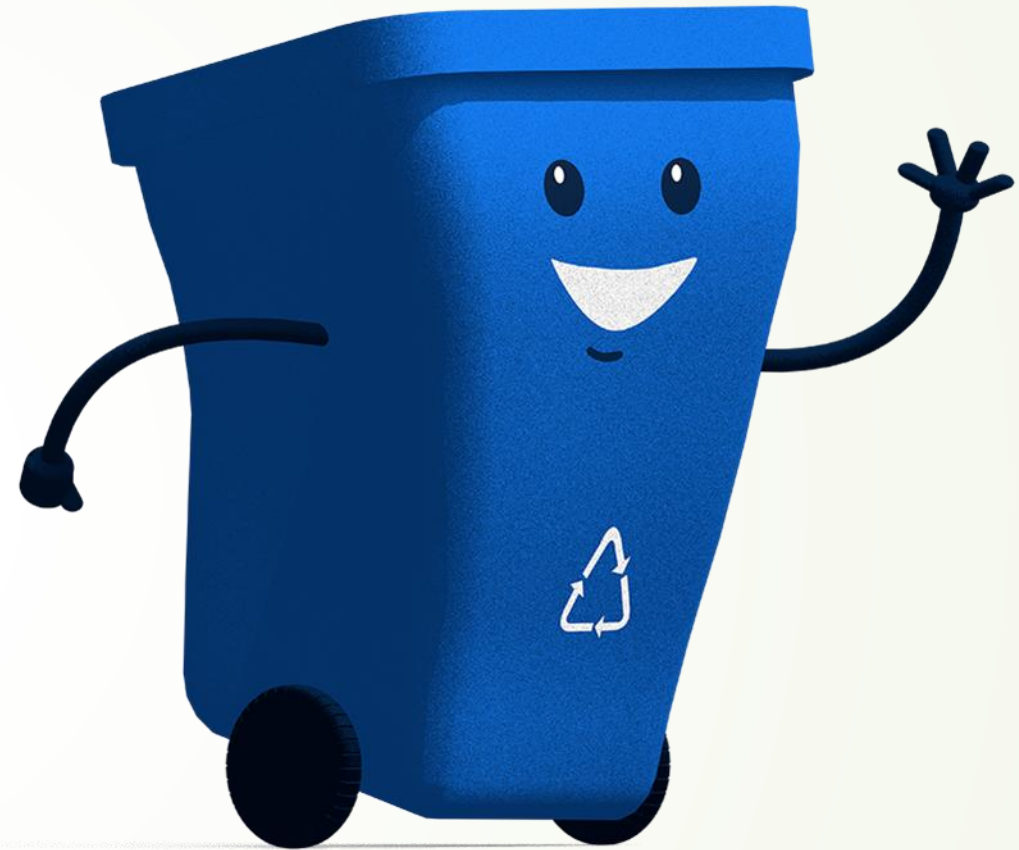
Promotional Activities

- Billboards
- Buses, Trains, Benches, Posters
- Radio
- Movie Theaters
- Print Media
- Digital Media
- Social Media
- Printed Materials



Challenges

- COVID-19
- Existing local campaigns
- Staff capacity & turnover



 **RECYCLE / RECICLE** THANK YOU FOR RECYCLING THESE:
GRACIAS POR RECICLAR ESTOS ARTICULOS SUELTOS:

 **Cans**
Latas



Aluminum and Steel Cans
latas de aluminio y metal

 **Cartons**
Cartones



Food and Beverage Cartons
de comida y bebida

 **Glass**
Vidrio



Bottles and Jars
botellas y frascos

 **Paper**
Papel



Cereal Boxes, Newspaper, Magazines and Mail and Flattened Cardboard
periódicos, revistas y aplane, las cajas de carton

 **Plastic**
Plásticos



Kitchen, Laundry, Bath: Bottles and Containers
productos de cocina, y baño: botellas y envases

NO!
Not in your recycling cart.



No Plastic Bags
No tire bolsas de plástico



No Food or Liquid (empty all containers)
No tire comida ni líquidos



No Clothing (drop-off only)
No tire bolsas de plástico



No Hoses, Wires, or Chains
No tire objetos que se puedan enredar



No Batteries
No tire comida ni líquidos

123.456.7890

Department Name

SampleUrl.org



Final Thoughts

- Campaign materials are free
- Can help smaller entities
- Partnerships
- Perseverance



Thank you!

Cassidy Campbell

Program Manager

Environment & Development
Department

North Central Texas Council
of Governments

ccampbell@nctcog.org

817-608-2368



 [Facebook.com/nctcogenv](https://www.facebook.com/nctcogenv)

 [@nctcogenv](https://twitter.com/nctcogenv)

 [nctcogenv](https://www.instagram.com/nctcogenv)

 [youtube.com/user/nctcoged](https://www.youtube.com/user/nctcoged)

 EandD@nctcog.org

 www.nctcog.org/envir

Live Poll #2

Webinar poll | 1 question | 65 of 134 (48%) participated

1. If you've tried to harmonize with neighboring organizations/agencies what, if any, barriers did you experience?
(Check all that apply) (Multiple Choice) *

65/65 (100%) answered



Next Panelists

Jill Aki Hrycyk

Senior Planner

Waste Prevention & Environmental
Services

Oregon Metro



July 15, 2025

Harmonization: How a region agreed to recycling and waste disposal messaging and design.



Presented by Jill Aki Hrycyk, Senior Planner
Oregon Metro



What we'll cover

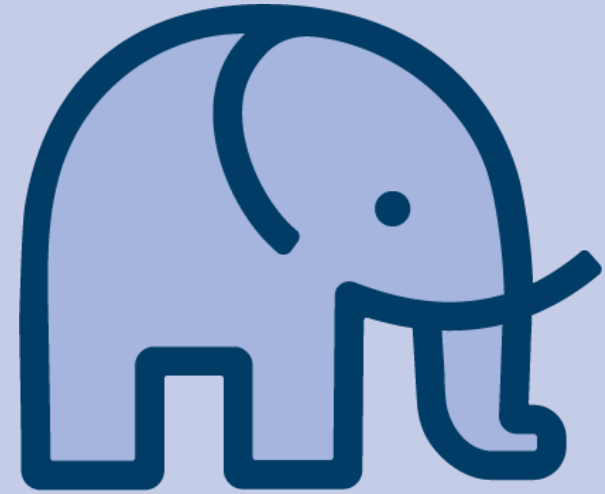
Goals

Process

User testing

Outcomes

Extended producer responsibility

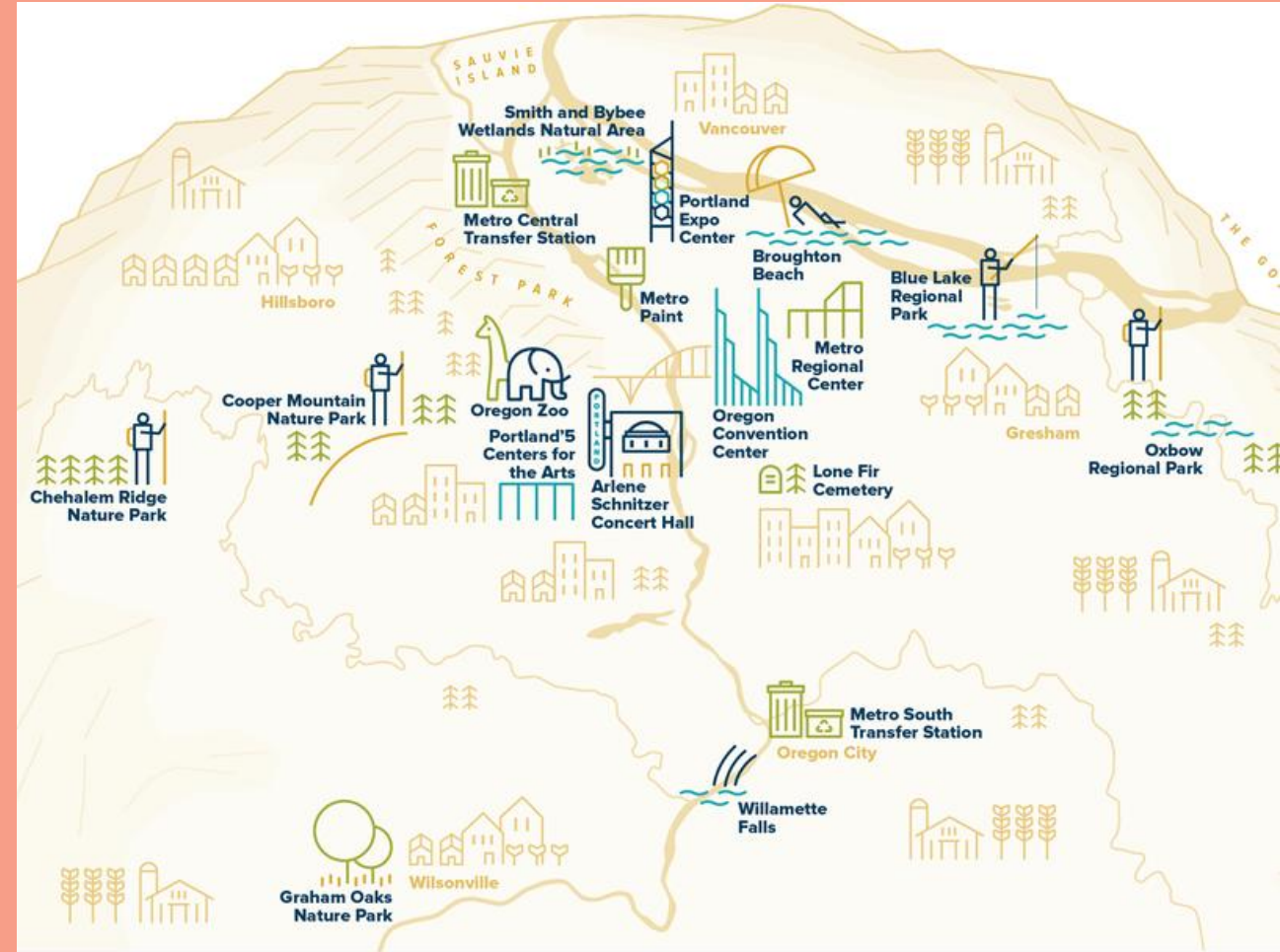




Who we are

Metro is a regional government and planning agency. We work on solid waste, land use, housing, parks and transportation planning as well as key venues like the Oregon Zoo and Oregon Convention Center.

We serve 24 cities in the Portland, Oregon area.





Today we'll talk
trash... and
recycling.

Recycling

Reciclaje

Утиль

Rác Tái chế

回收



21023

 No plastic bags or wrap,
lids, glass, garbage



2030 Regional Waste Plan

Implement regional standards for collection containers, colors, signage and other related information materials for single-family, multifamily and commercial services.



Decal/signage project goal and audience

Create regionally consistent decals and signage for multifamily that meets the needs of all users.



The challenge: inconsistency, contamination and agreeing to one regional design.

Before the project begins, establish the process and trust the experts.

- Multifamily is the most challenging. Lead with it.
- Local government staff know the criteria and the haulers.
- Designers know accessible design.
- Community partners know the experience, firsthand.

Let the community partners select and approve the design.





Primary design criteria

Wayfinding best practices

Create consistency

- Message hierarchy, layout, size of elements

Accessible type

- Strong, familiar typefaces with unique characters, heavier weights and white space

Accessible color

- High contrast, ADA compliant, can't rely on color alone (use photos/icons to compliment color system)



Design criteria

- Local gov't staff determine decal and sign sizes
- Prioritize bin identification and sorting
- Be clear across age, language and culture (prioritize non-verbal cue)
- Be visually distinguishable in the cluttered garbage/recycling areas
- Show individual photos over group photos
- Use four-factor language analysis (Vietnamese, Russian, Spanish and Simplified Chinese)
- Have no logos or contact information





**Most importantly, it
needs to work for the
users.**

Two designs for testing

Design concept A

Recycling



Reciclaje

Утиль

Rác tái chế

回收

Plastic bottles &
round containers



Metal



Paper &
cardboard



✘ NO: plastic bags or wrap, glass, garbage

Glass



Vidrio

Стекло

Thủy tinh

玻璃

Green, clear, brown bottles &
jars only, empty & dry



✘ NO: lids, lightbulbs, caps, broken glass, ceramics

Food Only

Solo
alimentos

Только пищевые
отбросы

Chỉ riêng
thực phẩm

仅限食物

All food, including meat, bones & coffee grounds



 No pet waste, liquids, napkins, to-go containers, garbage

Garbage

Basura

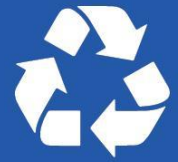
Mycop

Rác

垃圾

 NO: TVs, computers, batteries, hazardous waste (flammables, paint, pesticides)

Design concept B



Recycling

Reciclaje

Утиль

Rác tái chế

回收



X No plastic bags or wrap, glass, garbage



Glass

Vidrio

Стекло

Thủy tinh

玻璃



X No lids, lightbulbs, caps, broken glass, ceramics



Food Only

Solo
alimentos

Только пищевые
отбросы

Chỉ riêng
thực phẩm

仅限食物



 No pet waste, liquids, napkins,
to-go containers, garbage



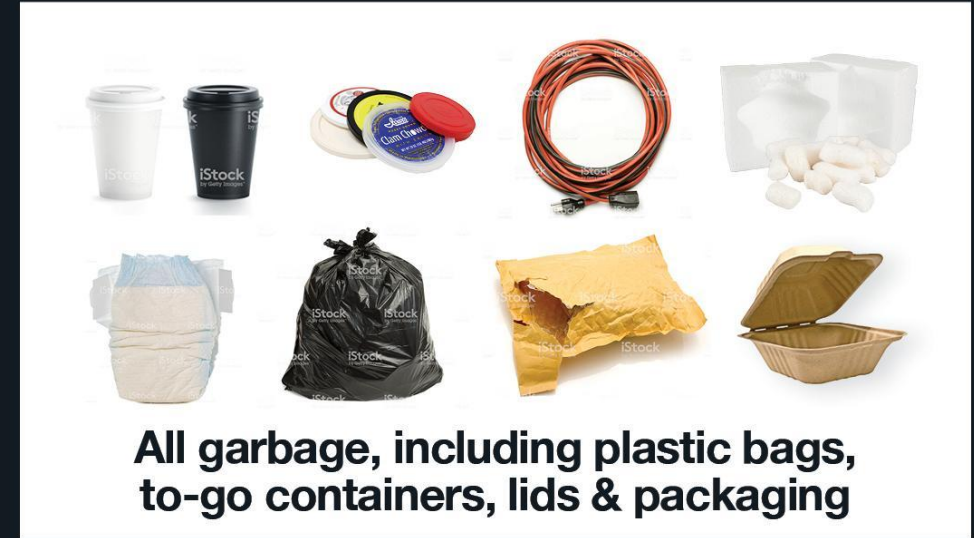
Garbage


Basura

Mycop

Rác

垃圾



 NO: TVs, computers, batteries,
hazardous waste (flammables,
paint, pesticides)



User testing



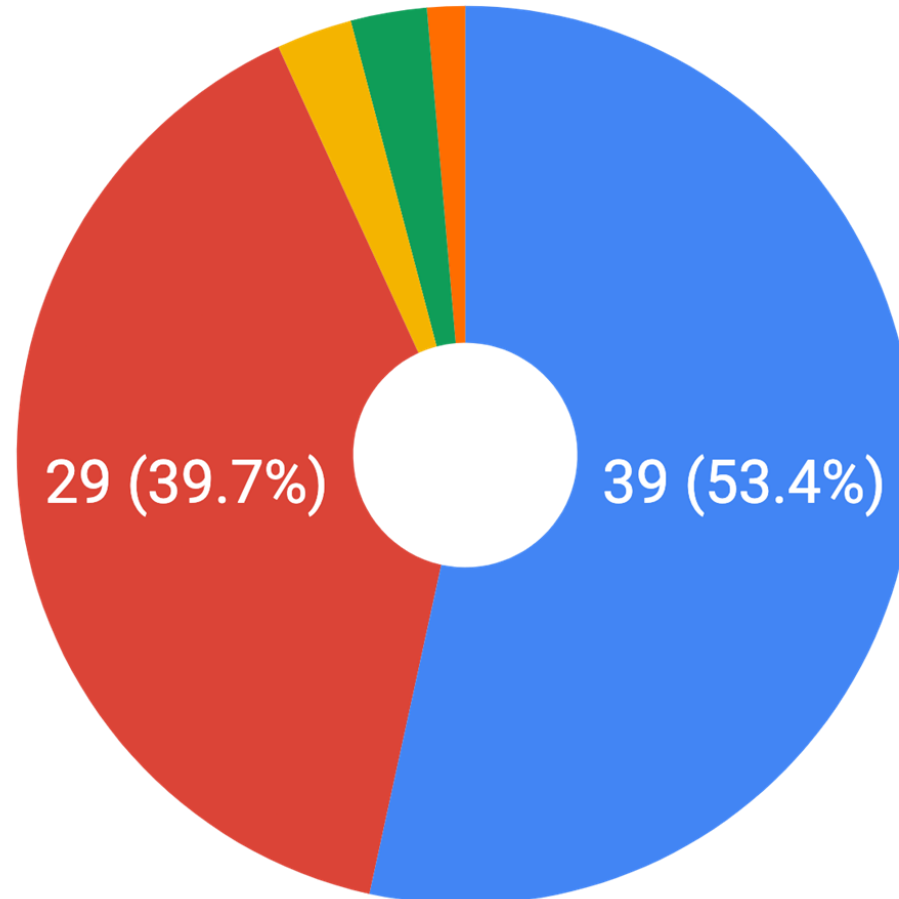
User testing process

- Co-created with Trash for Peace and Centro Cultural
- Residents provided feedback via printed surveys and over the phone
- A/B testing to measure decal effectiveness
- All participants indicated decal preferences

User testing participants

Languages

- English
- Spanish
- Vietnamese
- Russian
- Chinese



User testing participants

Type of Participant

Staff

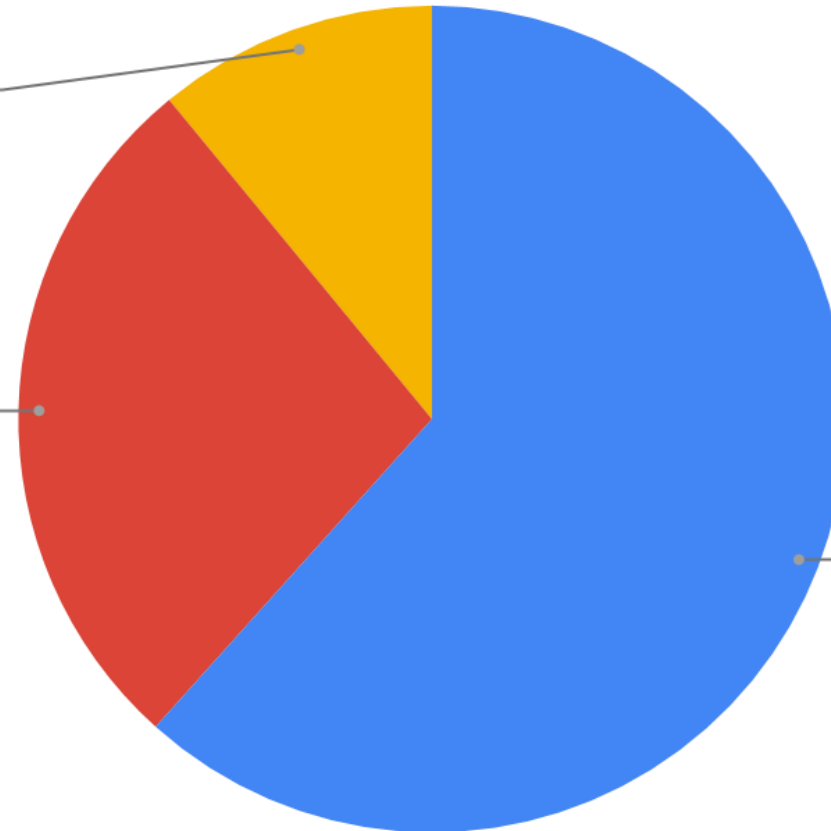
11.0%

EP

27.4%

Resident

61.6%



User testing priorities

- Layout preference (hierarchy, typography)
- Wording and visual comprehension
- Images (show accepted items vs. showing accepted and unaccepted items)
- Garbage decals with and without images of contaminating items commonly found in recycling stream

User testing feedback

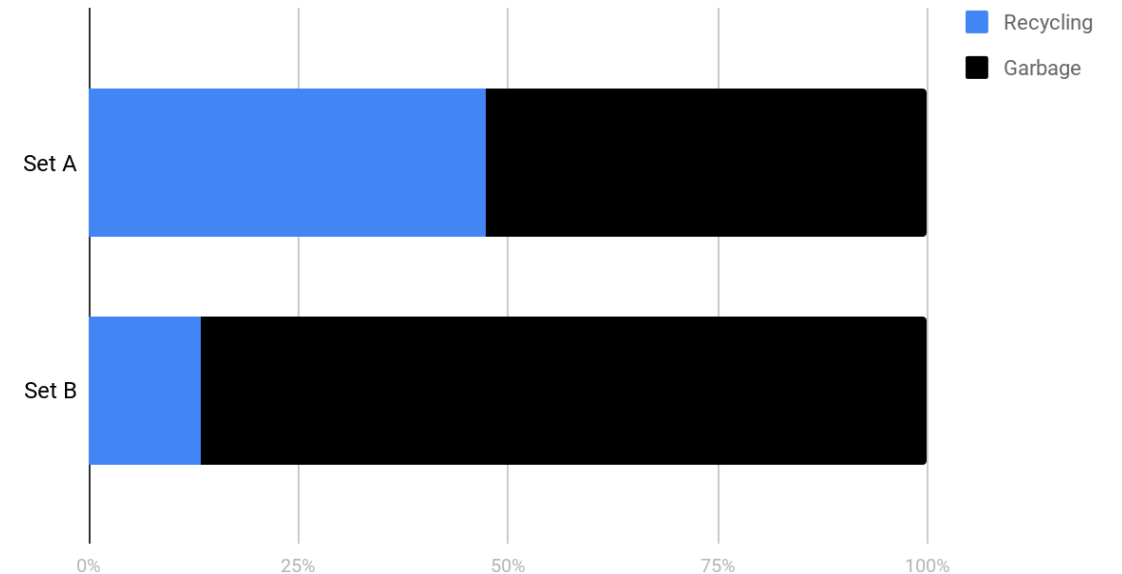
Decal effectiveness

- Participants who reviewed **Decal Set B** did better for 4 of 7 items:
 - Takeout containers, coffee cups, yogurt containers and plastic lids
 - No significant difference for coffee filters, milk cartons and glass jars

Which bin does a takeout container go into? (answer: garbage)

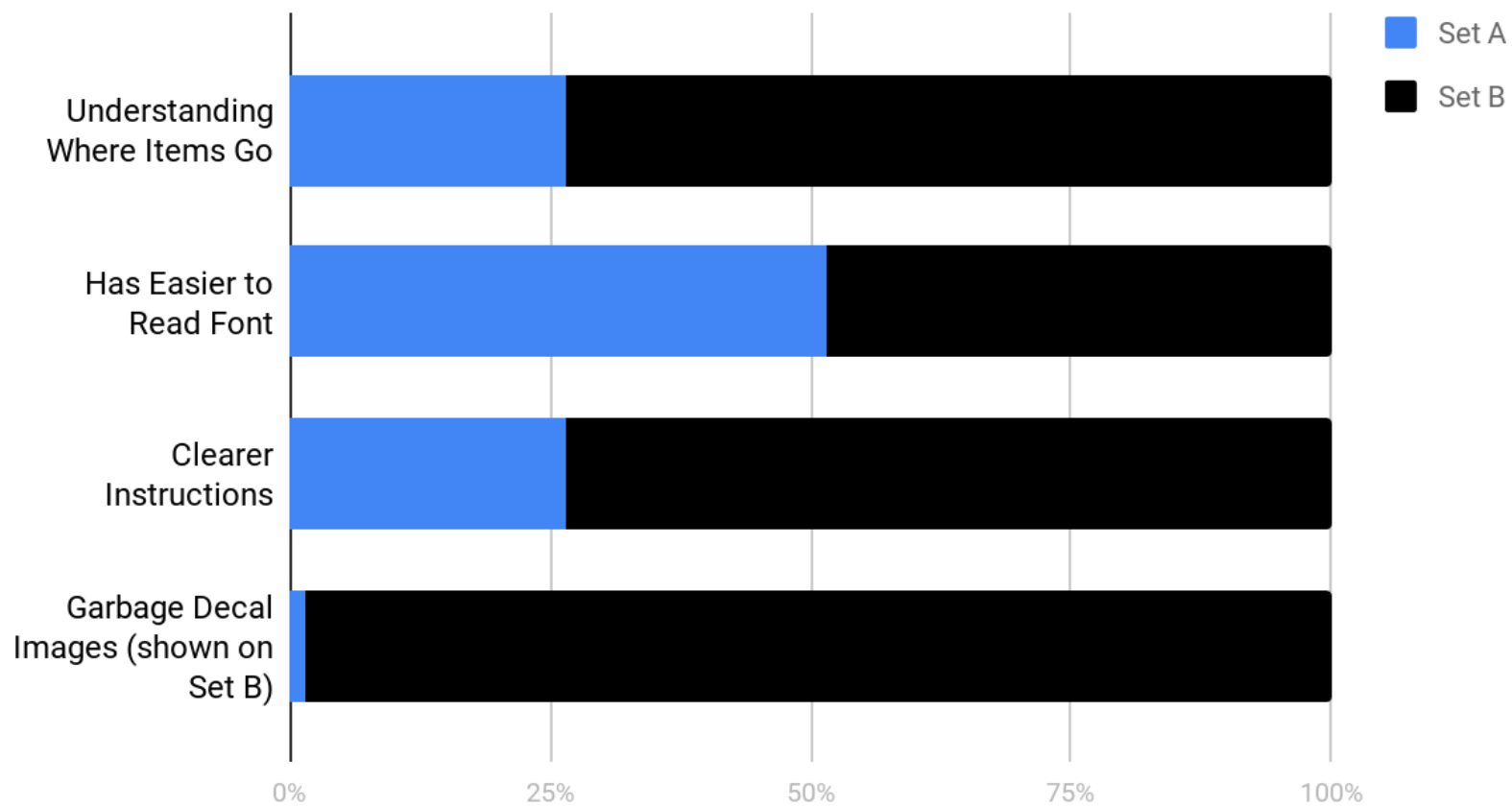


Which bin does a plastic lid go into? (answer: garbage)



Decal preferences

Clear Preference for Decal Set B



Decal feedback

“Bright colorful pictures make it easier to understand what goes in each category.”

“The different colors are helpful to distinguish the categories.”

“The images for what not to throw away are helpful.”

“Me gusta el B tiene otras fotos que nos indica que esos articulos no se ponen en ese contenedor.”

Decal feedback from Environmental Promoters

“The more images, the better! Definitely having images for each section, including what should NOT go in the containers, is important. Definitely an improvement! ”

“The large images makes it so much easier to know what each image is of. Previous signs had such small images it was hard to tell.”

“El conjunto B esta muy bien explicado con imagenes y letras.”

Final designs and outcomes



Final designs and outcomes

Recycling

Reciclaje Утиль Rác Tái chế 回收

Plastic bottles, plastic round containers, metal, paper & cardboard

❌ No plastic bags or wrap, lids, glass, garbage

Glass

Vidrio Стекло Rác Thủy tinh 玻璃

Bottles & jars only, empty & dry

❌ No lids, lightbulbs, caps, ceramics, broken glass

Food & Yard Waste

Alimentos y desechos de jardinería Пищевые и хозяйственные отходы Phế thải Thực phẩm và Rác Sân Vườn 食物及庭苑废物

Food scraps, coffee filters, plants & trimmings

❌ No pet waste, to-go containers, liquids, garbage

ClackCo Recycle Guide

Reduce, reuse, and then recycle right to reduce the energy needed to make new products, reduce pollution, and create jobs.

Recycling

Reciclaje Утиль Rác Tái chế 回收

Paper, flattened cardboard, metal, plastic bottles & plastic round containers
Empty & dry. Plastic items must be 2x2 inches or larger.

Glass

Vidrio Стекло Rác Thủy tinh 玻璃

In separate glass bin

Bottles & jars only empty & dry, no lids

Reduce & Reuse

Reduzca y Reutilice Экономия и повторное использование Giảm bớt & tái sử dụng

Simple actions add up! Recycling is great, but can you do more? Remember your travel mug or water bottle when going out, and bring a reusable bag when shopping.

Garbage

Basura Мусор Rác còn lại 垃圾

All garbage, including plastic bags, to-go containers, plastic lids & packaging

Large items (appliances, furniture, etc.): Call your garbage and recycling company for special pick-up and pricing.

Need more information?

Metro's Recycling Information Center 503-234-3000
ClackCo Sustainability & Solid Waste 503-557-6363

Full Guide clackamas.us/recycling/recycleguide
Guía de Reciclaje Hướng Dẫn Tái Chế
回收指引 Руководство по



Garbage

Basura Мусор Rác còn lại 垃圾

All garbage, including plastic bags, to-go containers, lids & packaging

❌ No TVs, computers, batteries, hazardous waste (flammables, paint, pesticides)

Apartments & Multifamily Garbage & Recycling

Sorting guide inside

Recycling

Reciclaje Утиль Rác Tái chế 回收

Plastic bottles, plastic round containers, metal, paper & flattened cardboard

❌ No plastic bags or wrap, lids, glass, garbage

Glass

Vidrio Стекло Rác Thủy tinh 玻璃

Bottles & jars only, empty & dry, put in glass-only bin

❌ No lids, lightbulbs, caps, ceramics, broken glass

Garbage

Basura Мусор Rác còn lại 垃圾

All garbage, including plastic bags, to-go containers, lids & packaging

❌ No TVs, computers, batteries, hazardous waste (flammables, paint, pesticides)

Other items

These things should not go in your garbage or recycling bins.

Large items, including electronics and furniture, ask your property manager or find donation options: 503-234-3000

TVs, computers, monitors, printers, keyboards, mice & other electronics: oregonrecycles.org

Hazardous waste: chemicals, propane tanks & flammable items: oregonmetro.gov/flamrecycler

Fluorescent light bulbs, batteries & things with batteries in them: oregonmetro.gov/flamrecycler

Medications: www.oregonmetro.gov/flamrecycler or askanexpert.at.503.234.3000

Not sure about an item? Go to oregonmetro.gov/flamrecycler or ask an expert at 503-234-3000.

Recycling

Paper, flattened cardboard, metal, plastic bottles, round containers (6 oz or larger), rigid nursery pots (4" or larger), all empty and dry

❌ No plastic bags or wrap, lids, glass, coffee cups, garbage, to-go containers

Find more information

WashingtonCountyRecycles.com
recycle@WashingtonCountyOR.gov
503-846-3605
@WashingtonCountyRecycles

Glass

Bottles & jars only, empty & dry

❌ No lids, lightbulbs, caps, ceramics, broken glass of any kind

Hazardous waste

Visit OregonMetro.gov/HHW or call 503-234-3000 for proper disposal options.

Includes chemicals, propane tanks and flammable items, medications, motor oil, TVs, computers or other electronics.

Garbage

All garbage, plastic bags, frozen food boxes, packaging with bubble wrap, to-go containers, cups, lids, straws and cutlery (paper, plastic and "compostable")

❌ No TVs, computers, batteries, hazardous waste (flammables, paint, pesticides), syringes or medical sharps

Bulky waste

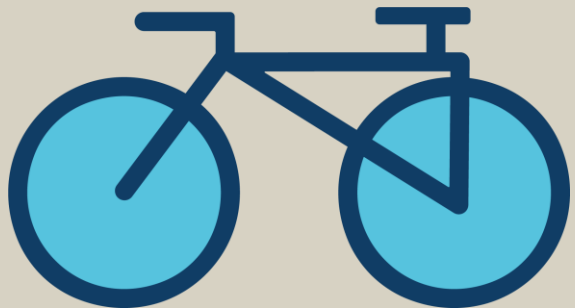
Consider giving away large household items that are still in good condition or visit WashingtonCountyRecycles.com/GRD for donation locations.

Disposal options:
Forest Grove Transfer Station
1525 B St.
Forest Grove, 97116
800-808-5901
No hazardous waste
Tualatin Valley Waste Recovery Facility
Located at Hillsboro Landfill
3205 SE Minter Bridge Rd.
Hillsboro, 97123
503-640-9427
No food or hazardous waste

Call before you go for disposal rates, to confirm accepted items and hours.

Extended Producer Responsibility

The next frontier



Moving forward: How do we integrate statewide/national recycling materials with our other waste stream messaging and EPR programs?

♻️ Recycling Guide

Thanks for recycling these items! All items must be empty and dry.

Following the guidelines of what is allowed in your recycling bin saves natural resources, reduces pollution and creates jobs.



Scan for: العربية, 简体中文, 繁體中文, ភ្នំព្រឹក, 한국어, Русский, Af-Soomaali, español, Tagalog, українська, tiếng Việt.

<h3 style="text-align: center;">Cardboard and Cartons</h3>  <p style="text-align: center;">Flattened cardboard, packaging boxes, food and beverage cartons Pizza boxes must be empty with no food residue.</p>	<h3 style="text-align: center;">Paper</h3>  <p style="text-align: center;">Newspaper, magazines, office paper, egg cartons, mail, paperback books, bags, and non-metallic gift wrap</p>
<h3 style="text-align: center;">Plastic</h3>  <p style="text-align: center;">Bottles, round containers, buckets, and rigid plant pots Caps OK if screwed on. All items must be 2 inches by 2 inches or larger.</p>	<h3 style="text-align: center;">Metal</h3>  <p style="text-align: center;">Metal cans, foil, empty aerosols, scrap metal, and empty paint cans</p>
<h3 style="text-align: center;">Glass</h3>  <p style="text-align: center;">Bottles and jars Remove caps and lids. Place in glass only bin</p>	

No!



No bagged recyclables



No batteries



No food or liquid
(empty all containers)



No plastic bags or stretchy plastics
(store or depot drop-off)



No hoses, cords, or wires



♻️ Recycling



Paper, flattened cardboard, metal, plastic bottles, round containers (6 oz or larger), rigid nursery pots (4" or larger), all empty and dry

✗ No plastic bags or wrap, lids, glass, coffee cups, garbage, to-go containers



Find more information



WashingtonCountyRecycles.com
recycle@WashingtonCountyOR.gov
 503-846-3605
[@WashingtonCountyRecycles](https://www.facebook.com/WashingtonCountyRecycles)

♻️ Glass



Bottles & jars only, empty & dry

✗ No lids, lightbulbs, caps, ceramics, broken glass of any kind



⚠️ Hazardous waste



Visit OregonMetro.gov/HHW or call 503-234-3000 for proper disposal options.
Includes chemicals, propane tanks and flammable items, medications, motor oil, TVs, computers or other electronics.

🗑️ Garbage



All garbage, plastic bags, frozen food boxes, packaging with bubble wrap, to-go containers, cups, lids, straws and cutlery (paper, plastic and "compostable")

✗ No TVs, computers, batteries, hazardous waste (flammables, paint, pesticides), syringes or medical sharps



Bulky waste



Consider giving away large household items that are still in good condition or visit WashingtonCountyRecycles.com/GRD for donation locations.



Disposal options:
[Forest Grove Transfer Station](http://ForestGroveTransferStation.com)
 1525 B St.
 Forest Grove, 97116
 800-808-5901
 No hazardous waste

[Tualatin Valley Waste Recovery Facility](http://TualatinValleyWasteRecoveryFacility.com)
 Located at Hillsboro Landfill
 3205 SE Minter Bridge Rd.
 Hillsboro, 97123
 503-640-9427
 No food or hazardous waste

Call before you go for disposal rates, to confirm accepted items and hours.

Thank you!



Our Panelists



Jill Martin
The Recycling Partnership

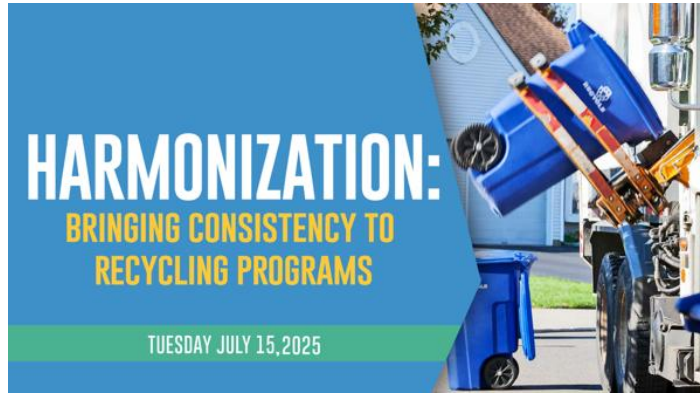


Cassidy Campbell
North Central Texas
Council of Governments



Jill Aki Hrycyk
Oregon Metro

Today's Program Online



- Recording
- Presentation slides
- Resources
- Chatlog

Link will be emailed in coming days

Archive of Past Programs



- Labels & Signage
- Rebuilding Confidence in Recycling
- Developing Bin Standards
- Reuse programs

+ More



Next Up:

Save the date!

CHANGING BEHAVIOUR

CASE STUDIES & BEST PRACTICES
TO INFLUENCE ZERO WASTE BEHAVIOUR

WEDNESDAY, SEPTEMBER 3RD | 1:00 PM ET



Jennifer Tabanico
Action Research



Gretchen Engbring
Stanford University

Thank You to Our Panelists!



Jill Martin

The Recycling Partnership



Cassidy Campbell

North Central Texas
Council of Governments



Jill Aki Hrycyk

Oregon Metro

Share Feedback with Presenters



Post-Webinar Survey:

- Prompt at end of program, or
- Look for Email tomorrow