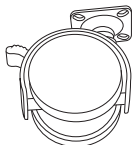


TOOLS REQUIRED:

Not Included

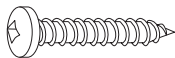


Robertson #1 Screwdriver



x4) Locking Casters with plate

INCLUDED HARDWARE:



x16) 6 x 3/4" Plastic Screws

PLEASE NOTE: Hardware listed reflects what is needed for 1 Mosaic unit.

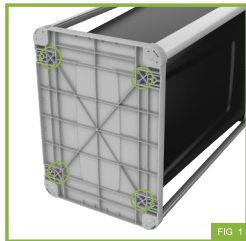


FIG. 1

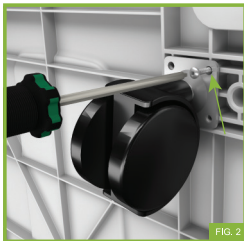


FIG. 2



FIG. 3

STEP-BY-STEP INSTALLATION INSTRUCTIONS

- 1 Remove the lid and Flip the Mosaic station on it's side so you can easily access the bottom side of the base. Casters will be installed onto the circled locations. **(FIG. 1)**
- 2 Holding the Caster plate flush to the Base of the Mosaic aligning the holes, install 1x screw into each of the 4 holes in caster plate. Continue with this step until all Casters have been installed. **(FIG. 2)**
- 3 Casters have now been successfully installed on the Mosaic. Sit Mosaic in an upright position, place lid back onto the station and place in your desired location. **(FIG. 3)**

NOTE: To reposition your Mosaic after caster installation, be sure to unlock all casters so they roll freely. When you have it in position, simply push down on each caster lock so your bin stays in place.