



Let's Recycle Better, Together.



INTO THE GREEN BIN

COLLECTING FOOD WASTE FROM INSTITUTIONAL SETTINGS

IN PARTNERSHIP WITH 

WEDNESDAY JANUARY 12TH
1:00 - 2:30 P.M. EST

Today's Panelists



Gary Bilbro

Director of Sales
EcoSafe Zero Waste
Lewisville, NC



Jaclyn Hochreiter

*Director, Zero Waste
Client Services*
Foodprint Group
New York, NY



Abbey Massaro

Environmental Specialist
Center for EcoTechnology
Springfield, MA



Heather Cashwell

*Manager of Waste
Reduction & Recycling*
North Carolina State
University
Raleigh, NC

Join the Discussion!

From your toolbar:



Share your experience
& opinions

Look for links
to resources

Type direct questions
for panelists

Collecting Food Waste From Institutions





ECOSAFE®

Z E R O W A S T E

— INTO THE GREEN BIN —

Collecting Food Waste from Institutional Settings



ABOUT US



At EcoSafe® we are driving social change using our innovative food scrap collection programs and industry leading compostable products.

- **Innovators** of premium compostable film products and programs
- **Facilitators** of diverting food scraps from landfills.
- **Experts** on making composting second nature in residential, institutional, and commercial settings.

PRODUCTS

CERTIFIED
COMPOSTABLE

STAR-SEALED
BOTTOM

USER
FRIENDLY

BAG
DISPENSERS



HOW CAN WE HELP?



BE COMPLIANT



BEST PRACTICES



CLEAN & SAFE



THIS



NOT THIS

PRO TIPS

Keep the **Wrong Items** out of the bin.

- ✓ Informational communications assists with educating waste generators
- ✓ In schools, engage students to develop their own signage
- ✓ Market your achievement to eagerly anticipating customers



ECOSAFE® FOOD SCRAP COLLECTION PROGRAMS



Ensure to achieve HIGH participation and LOW levels of contamination!

Programs include:

- Right-size fit compostable liners and bags
- Busch Waste Watcher Bins
- Compostable bag dispensers
- Online training & after-sales support
- Onboarding materials & signage



COMPOSTING FOR HEALTHY SOILS



SUCCESS STORIES

Engage Young Students

Busch Systems Waste Watcher + Sole Foot Pedal Bin *(discontinued)*



Amanda Cheung

Grade 5 Teacher at Surrey Christian School,
Cloverdale Campus

"Our deep hope is that students and staff practice being Earth Keepers by minimizing the amount of waste that we create. Grade 5 students go into each class to check the recycling bins before they are emptied at one of our main recycling stations. The main recycling bins encourage students to put items in the correct bins and the clip in frame allowed us to place images of the items that are permitted in each bin to make it more student friendly. Students have enjoyed being Earth Keepers and EcoSafe has played a large role in our desire to be Earth Keepers."

SUCCESS STORIES



Improve Office Settings Busch Systems Waste Watcher



Sarah Mammel

Internal Comms and Culture Manager at
The Flowr Corporation

"Waste Watcher bins around the facility! We love them for their slim style that fits in some of our tight spaces and hallways with limited room for big bins, the ability to put signage clearly front and center – where we have images showing what goes in each bin, and for the individual bin tops as well!"

"We have been using these bins for close to 3 years now and they have all held up and are performing just as we had hoped."

SUCCESS STORIES



Help Custodial Staff Busch Systems and EcoStations



Kenny Murphy

Custodian at Beulah Payne School

"The EcoSafe program has immediately reduced the amount of trips I was making to and from the dumpsters during lunchtime."



Sylvia Branch

Principal of Beulah Payne

"This partnership with EcoSafe is extremely helpful with teaching our students to become more eco-friendly and be a part of the solution."

**LETTUCE
COMPOST
TOGETHER!**



GARY BILBRO

Director of Sales

gary@ecosafezerowaste.com

www.ecosafe.green

[Twitter](#) [Facebook](#) [Instagram](#) [LinkedIn](#) @ecosafezw

Live Poll #1

What sources of food waste are you currently collecting?

(check all that apply)

- N/A – No current program
- Back of house scraps – kitchen prep
- Front of house dining scraps—collect from consumers
- Office / other non-dining locations
- Compostable packaging (any settings)



BANK TRANSITION TO COMMUNAL WASTE STATIONS

An Opportunity for Increased Diversion,
Labor Savings, and Behavior Change

JAC HOCHREITER
Zero Waste Director

jaclyn@foodprintgroup.com

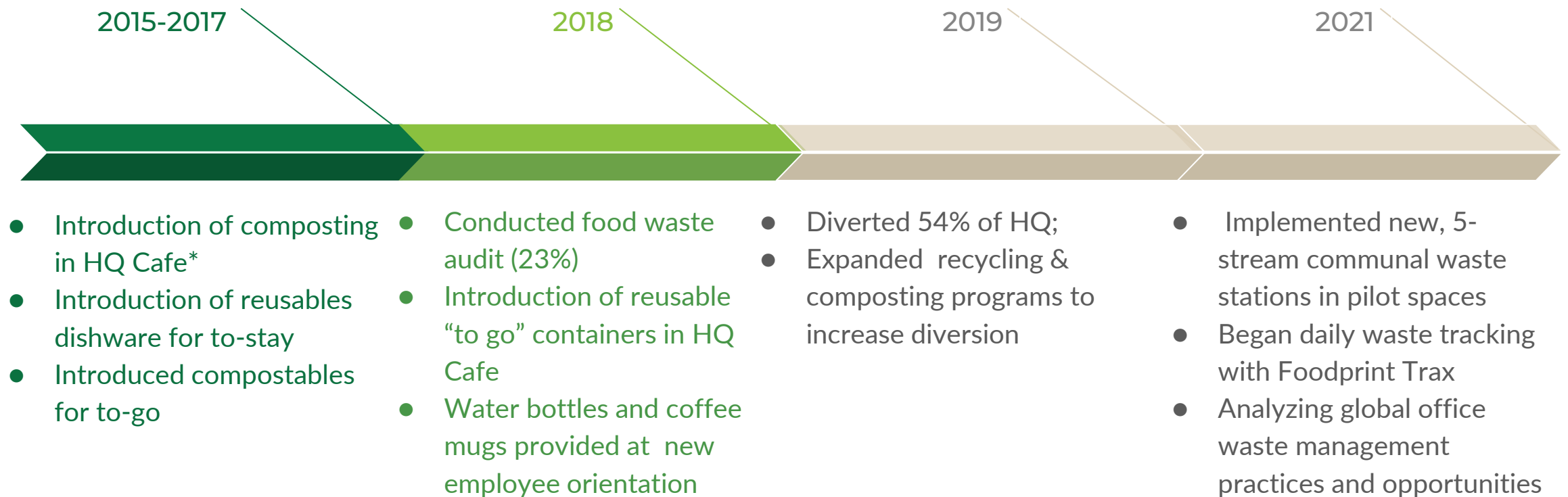


www.foodprintgroup.com



FOOD WASTE REDUCTION JOURNEY

Bank client has been actively rethinking food waste at headquarters and various global offices. The chart below includes highlights of this journey.

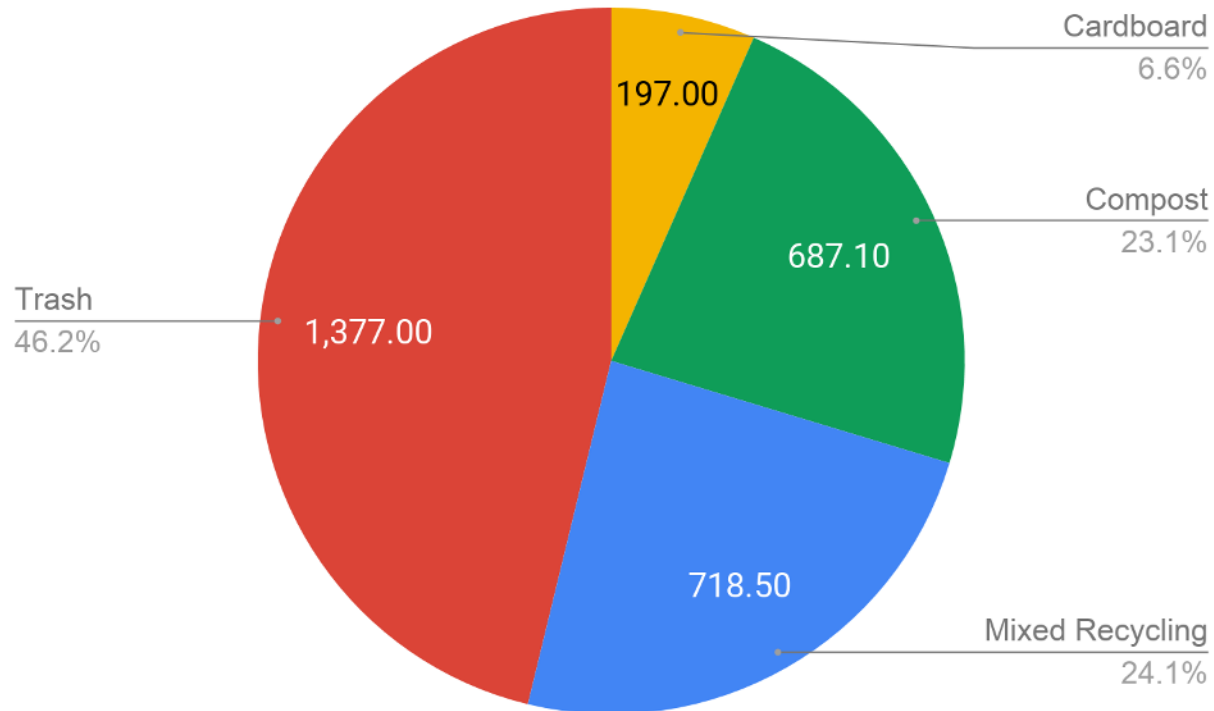


*Food service operator at the bank was brought into early conversations early about climate goals (food waste), and composting became a requirement in contract.

AUDIT RESULTS

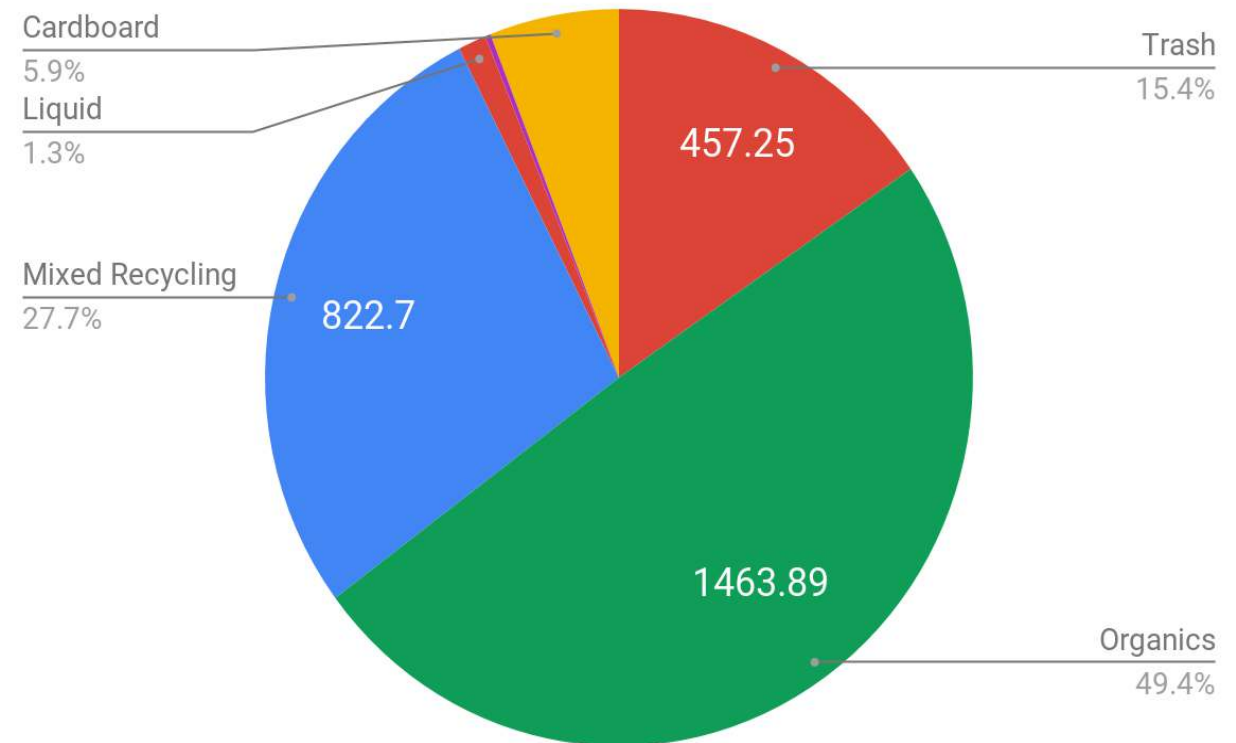
Understanding
what's possible

Unsorted



Diversion: 53.8%

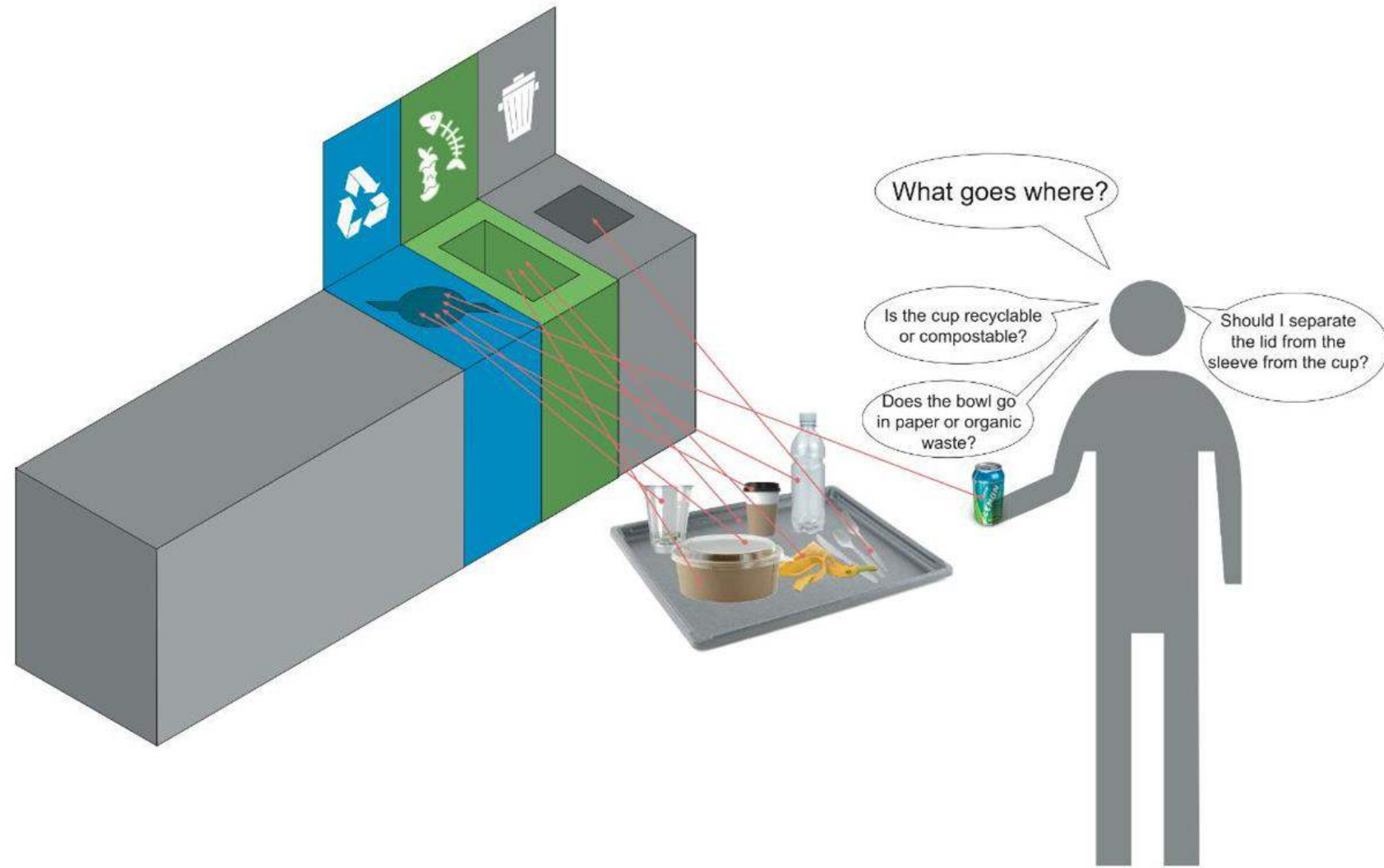
Sorted



Diversion Potential: 85.6%

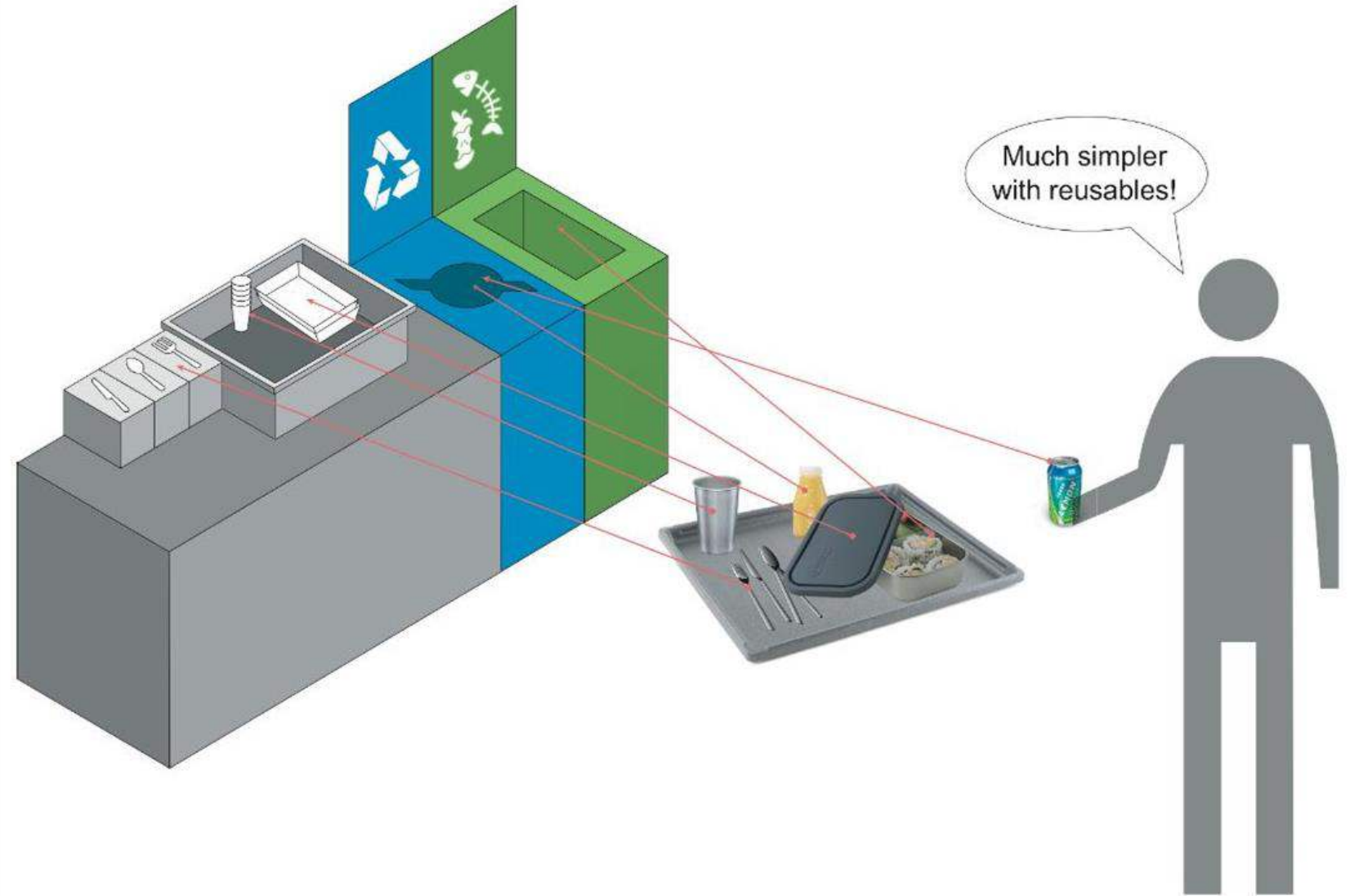
WHAT GOES WHERE?

WHY CHOOSE REUSABLES?!



WHAT GOES WHERE?

Reusables reduce confusion and therefore contamination!



STEPS TO INCREASE PARTICIPATION



- Collected case study data, peer experiences and best practices
- Aligned change with return-to-office
- Solicited design expertise on placement
 - Incorporating space types, traffic flow, required egress, etc.
- Consistent color-coding with various visual cues
- Focused on raising awareness through multiple
 - Provided every occupant with a desktop “mini-bin” for brief waste storage



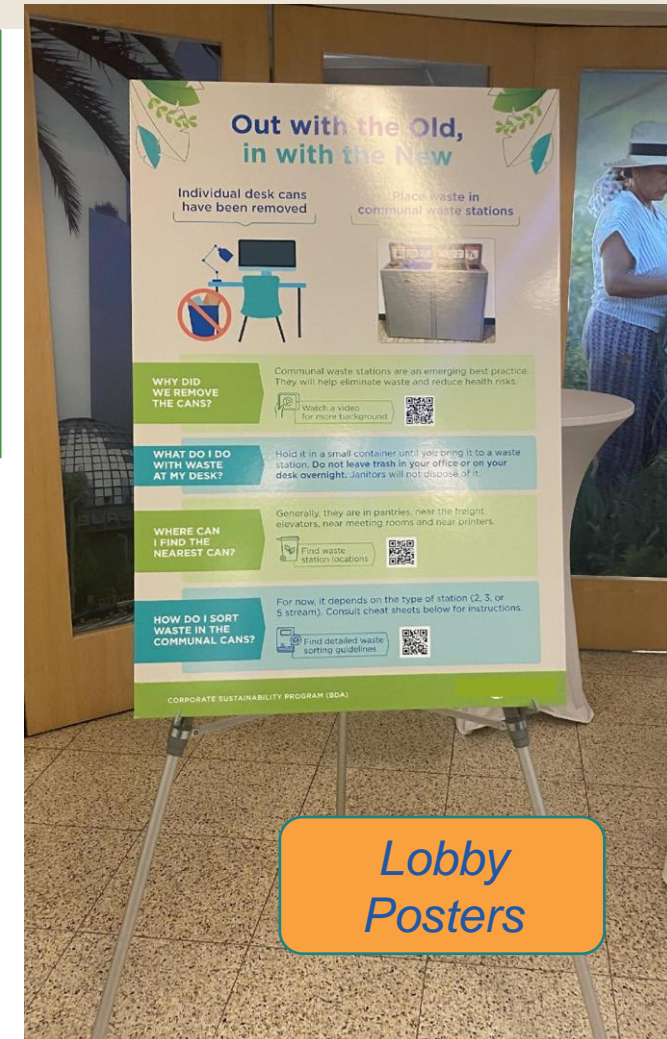
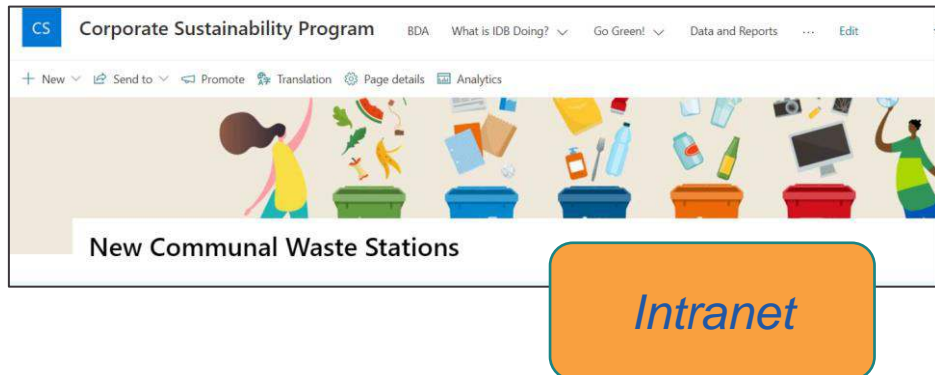
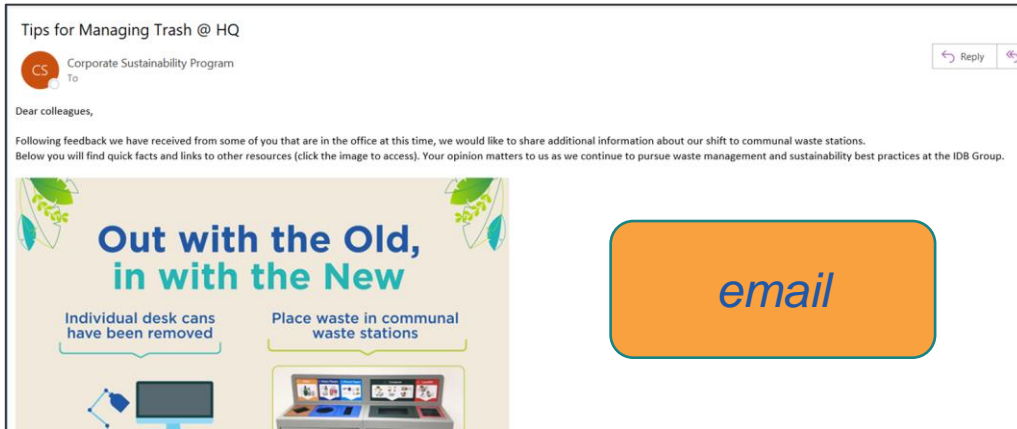
SUPPORTING THE SHIFT



TACTICS ¹	CHANGE MANAGEMENT PROGRAM ELEMENTS
Alter the environment to enable desired behavior	Provide appropriate infrastructure: remove deskside bins, install centralized stations, provide mini-bin for short-term storage
Recruit early adopters / champions to model behavior	Green Ambassadors, Leadership engagement, Personal testimonials
Gamify	Ongoing calendar of activities, events, and incentives (contests, raffles, games, learning) to engage and motivate employees
Educate	Utilize multiple channels (events, presentations, posters, chasqui, newsletters, GoDigital screens, RTO website) to share bin maps, videos, sorting guidelines, successes, and updates Webinars on the safety of waste diversion in the face of COVID.
Induce positive feelings + feedback	Share environmental impact data and other program outcomes / benefits; offer incentives
Invite input from users	Feedback forums (written, verbal): Cafeteria table; emails; Q&A sessions

¹ based on input from Dr. Christine Prue, CDC Behavioral Change expert

RESOURCES & COMMUNICATIONS



All materials link to: bin maps, sorting guides, videos

SHORT, FUN VIDEOS



1



2



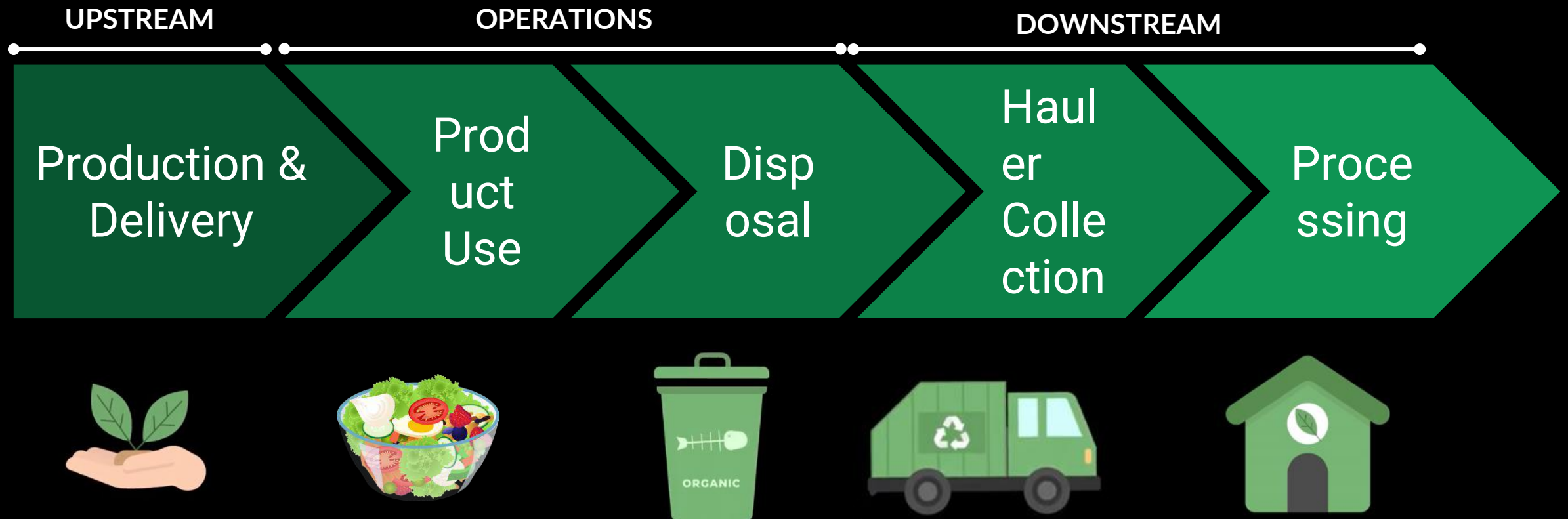
3



4

APPENDIX SLIDES

MATERIAL & RESOURCE FLOW



COVID-SAFE CENTRALIZED BINS

Safer for Cleaning Staff

- Centralized waste bins are safer for housekeeping staff, since staff will be on each floor for less time, and will have to interact with far fewer bins/liner bags.
- Overall, the risks for general employee transmission through centralized waste stations are far lower than the risk of cleaning staff transmitting from handling waste.

Sanitation stations are encouraged within certain offices and **centralized waste station can be easily integrated into sanitation areas**, especially given preference that stations be in convenient areas.

Just As Safe As for Employees

- Centralized waste bins are no less safe than desk bins for employees, as long as the bins are “no touch” when discarding materials.
 - Holes for waste streams should be large and on top of the bin (as opposed to a side opening)
- Use similar cleaning protocols as you would for bathroom surfaces for waste stations to reduce surface transmission possibilities.
- There is no research stating that central waste bins are unsafe.
- [CDC guidance](#) only states to use “no-touch” trash bins where possible.

Live Poll #2

What stage of development is your food waste collection program? *(check one)*

- N/A – No current program
- Planning / pilot stage
- Beginning – still working out kinks; limited recovery
- Established – room to expand
- Comprehensive

Collecting Food Waste From Offices

Abbey Massaro, Environmental Specialist

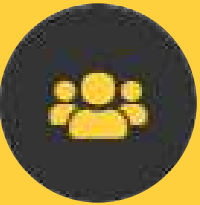
January 12, 2022



Wasted Food Solutions



Case Studies



Assistance for
Service
Providers



Partner With Us



Toolbox



FREE ASSISTANCE FOR BUSINESSES & INSTITUTIONS

RecyclingWorks MA is funded by MassDEP, delivered under contract by the Center for EcoTechnology



recyclingworksma.com



MASSACHUSETTS WASTE BANS

Commercial food waste (1 ton/week threshold, reducing to 0.5 ton/week 11/1/22)

Cardboard & paper

Metal, glass, and plastic containers

Construction & demolition materials

Yard waste

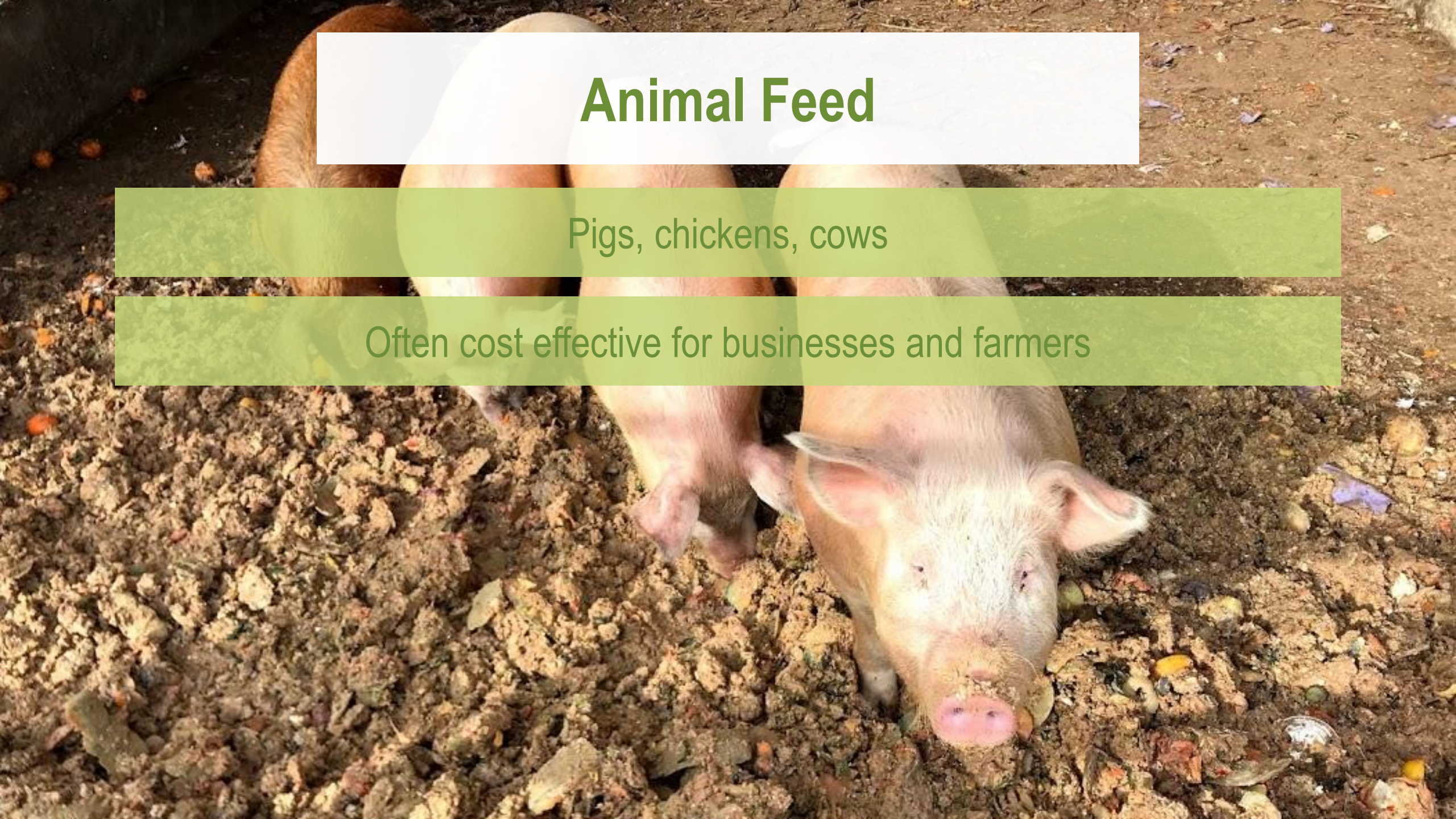
recyclingworksma.com/waste-bans-and-compliance/

Mattresses & textiles

Animal Feed

Pigs, chickens, cows

Often cost effective for businesses and farmers



Commercial Compost Sites



Windrow

In-vessel

Aerated static pile

A photograph of two large, green, cylindrical anaerobic digestion tanks at a farm. The tanks are situated in a grassy field with a wooden barn and a forested hill in the background. The tanks have circular access doors and a small dome-shaped vent on top. The text 'Anaerobic Digestion' is overlaid in a green box on the right side of the image.

Anaerobic Digestion

Microorganisms break down organic material

Creates biogas and digestate

Feedstocks typically include food waste, fats, oils, greases, manure

Collecting Organics from Institutional Settings

Same amount of material

Frequency of material
collection

Facilities or janitorial crews
are the decision makers

Conduct an audit



CET Office Case Study





Kitchen countertop compost collection



Live Poll #3

What is the #1 roadblock / barrier your program faces? *(check one)*

- Lack of leadership support / resources
- Issues or perceptions with odors, pests
- Contamination / Lack of participation
- Missing infrastructure (collection service, processors, etc.)
- Other *(share in the Chat)*

CLOSED LOOP

NC STATE

ORGANICS DIVERSION AT NC STATE UNIVERSITY



NC STATE



- 36,000+ students
- 9,000+ faculty/staff
- 700+ buildings
- 2,100+ acres

2015 WASTE-TO-LANDFILL CHARACTERIZATION STUDY

38% compostable

University Diversion Goal

70%

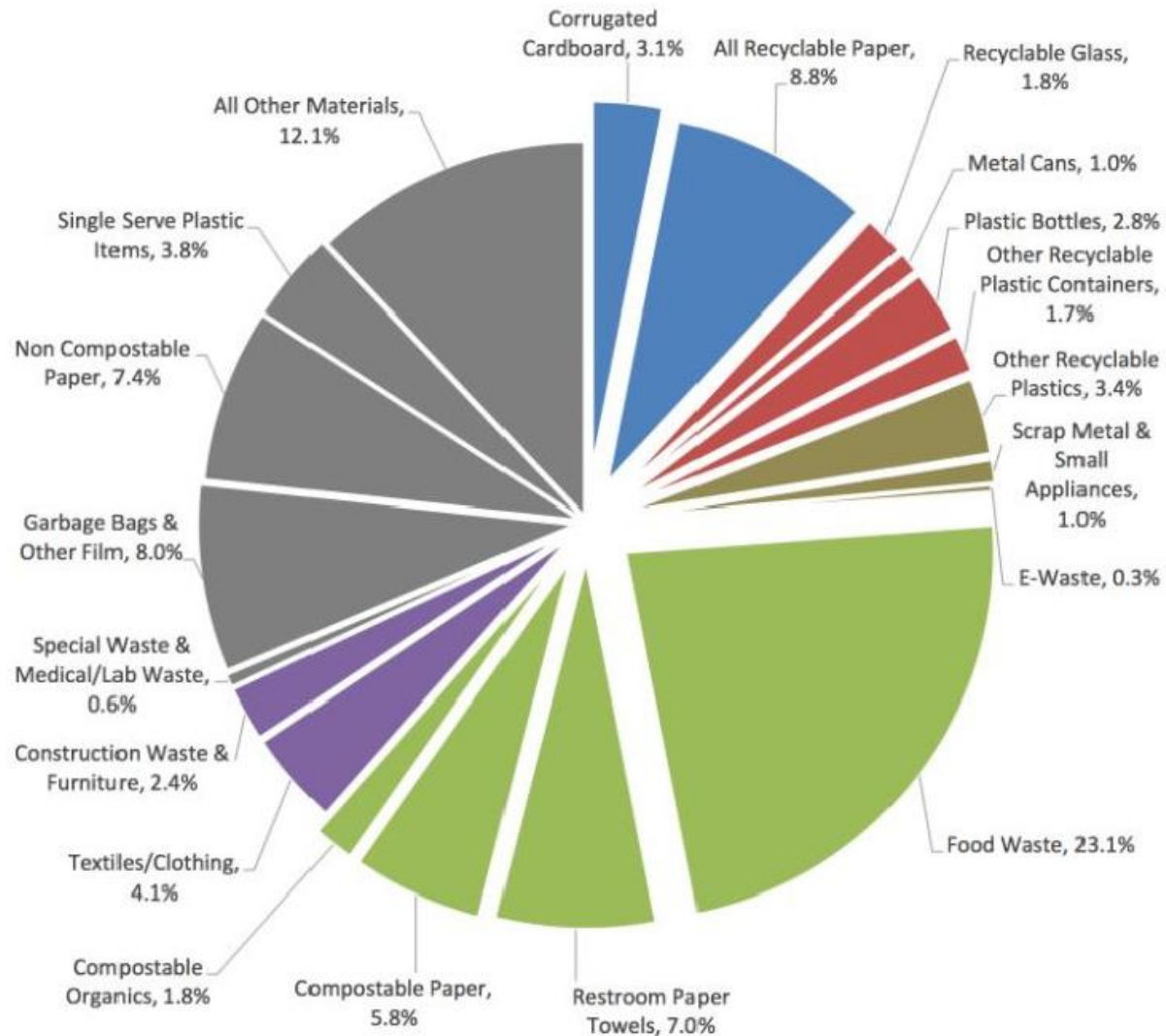
Diversion Rates

2018: 51%

2019: 54%

2020: 54%

2021: 61%



COLLECTION LOCATIONS



Dining Halls
Student Centers
Campus Restaurants



Greenhouses & Labs
Arboretum & Grounds
Campus Buildings



Residence Halls
Residence Apartments



Special Events
Athletic Events



ATHLETICS



EVENTS

RESIDENCES



PIZZA BOX
COMPOSTING



IN-ROOM COMPOSTING
JARS & PAILS



PAPER TOWEL
COMPOSTING

APARTMENT COMPOSTING





INDOOR DINING



OUTDOOR DINING



ZERO WASTE WORKPLACE



CHALLENGE: CONTAMINATION

**Matt makes compost with your food scraps.
Let's help Matt.
Only place **YES** items in the green dumpster.**

✓ YES!

NO!



REMOVE all food from packaging prior to composting!

NC STATE UNIVERSITY WASTE REDUCTION & RECYCLING | 919.515.9421 | RECYCLING.NCSU.EDU | RECYCLING@NCSU.EDU

QUICK START GUIDE TO COMPOST

LEARN MORE AT
[RECYCLING.NCSU.EDU/COMPOST](https://recycling.ncsu.edu/compost)

#1 IDENTIFY WHAT IS COMPOST...

ALL FOOD PRODUCTS

meat, egg shells, bones, cheese, fruit, vegetables



PAPER TOWELS & NAPKINS

plus BPI approved compostable products



...AND WHAT IS **NOT** COMPOST

DO NOT PLACE THESE
ITEMS IN THE COMPOST



NO Plastic Bags



NO Wrappers



NO Plastic Containers



NO Foil



NO Condiments



NO Cans

**PLEASE KEEP OUR COMPOST FREE
OF CONTAMINANTS!**

Remember to **remove** all food from plastic
packaging prior to composting.
NO plastic, wrappers, foil, cans, or
plastic packaging allowed!

#2 USE YOUR NEW DESKSIDE MINIBIN OR THE COMPOSTING BIN SET UP IN BREAKROOMS & HALLWAYS



TIPS FOR YOUR DESKSIDE MINIBIN

- Line your bin with used newspaper or paper towels.
- Empty your miniBIN into a breakroom or hallway composting bin
- Clean with a paper towel (which you can compost!)



WASTE REDUCTION & RECYCLING
recycling.ncsu.edu | 919.515.9421 | @ncstaterecycles



CLOSED LOOP NARRATIVE



CONNECT WITH US!

HEATHER CASHWELL

Manager

heather.cashwell@ncsu.edu

ADAM BENSLEY

Waste Diversion Coordinator

ajbensle@ncsu.edu

MATT BALL

Compost Facility Operator

mgball@ncsu.edu



**WASTE REDUCTION
AND RECYCLING**

NC STATE UNIVERSITY

recycling.ncsu.edu

[@NCStateRecycles](https://www.instagram.com/NCStateRecycles)

Live Poll #4

How significant an issue is contamination? *(check one)*

- N/A – no existing program
- Minor concern
- Moderate but manageable
- Significant – major priority to address
- Critical – threatens viability of program

Our Panel



Gary Bilbro

Director of Sales
EcoSafe Zero Waste
Lewisville, NC



Jaclyn Hochreiter

*Director, Zero Waste
Client Services*
Foodprint Group
New York, NY



Abbey Massaro

Environmental Specialist
Center for EcoTechnology
Springfield, MA



Heather Cashwell

*Manager of Waste
Reduction & Recycling*
North Carolina State
University
Raleigh, NC

Thank You to Our Panelists!

Moderator:

Alec Cooley

Busch Systems

alecc@buschsystems.com

Gary Bilbro

EcoSafe Zero Waste

gary@ecosafezerowaste.com

Jaclyn Hochreiter

Foodprint Group

jaclyn@foodprintgroup.com

Abbey Massaro

Center for EcoTechnology

abbey.massaro@cetonline.org

Heather Cashwell

North Carolina State University

heather.cashwell@ncsu.edu

Coming Up Next Month:



**TACKLING LITTER &
RECYCLING CONTAMINATION:**
STEPS TO INFLUENCE BEHAVIOR IN
PARKS AND OUTDOOR PUBLIC SPACES
TUESDAY FEBRUARY 15TH 1:00 - 2:30 P.M. EST.

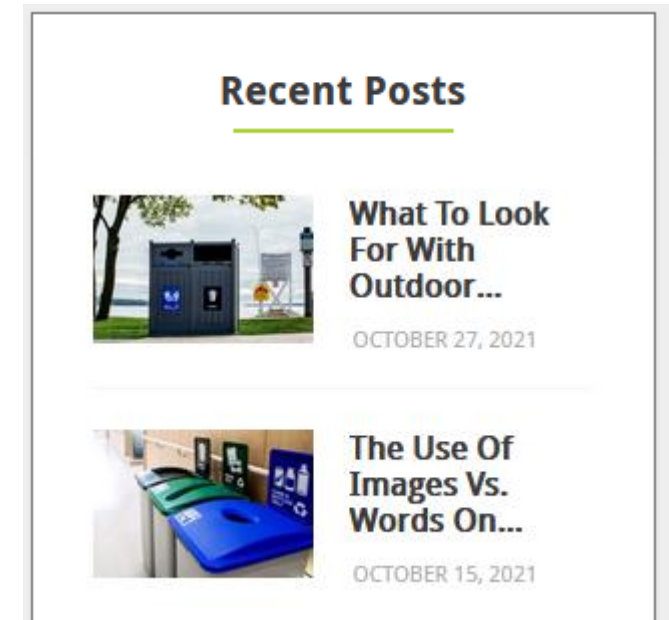
Online Resources

Program Resources

- Download presentation slides
- Recording
- Links to speaker resources
- Responses to Q&A

Visit: buschsystems.com/blog

Advancing Recycling Blog Series



Need Credit for CEU's?

Email Rebecca Rainey
to request a
Certificate of Attendance

rebeccarainey@buschsystems.com