



Let's Recycle Better, Together.

FINDING THE PERFECT OUTDOOR BIN:

WHAT SPECS & FEATURES TO LOOK FOR

WEDNESDAY MARCH 23RD 1:00 - 2:30 P.M. EST.



Today's Panelists



Alec Cooley
Senior Advisor
Busch Systems



John Lajner
*Research &
Development Manager*
Busch Systems



Ryan Miltimore
*Business Development
Manager*
Busch Systems



Rebecca Rourke
Account Manager
Busch Systems

Agenda

1. Operational Efficiency

- Capacity
- Liners
- Top vs. side load
- Other hardware

2. Durability

- Environmental hazards
- Use & Abuse

3. Miscellaneous

Product demonstration follows at the very end

Join the Discussion!

From your toolbar:



Share your experience
& opinions

Look for links
to resources

Type direct questions
for panelists

Capacity



Bag vs Rigid Inner Liner



Top vs Side-load



Top vs Side Opening



Anchoring Bins ~ Site Prep



Hardware: Flaps & Baffles



Hardware: Internal Deflectors





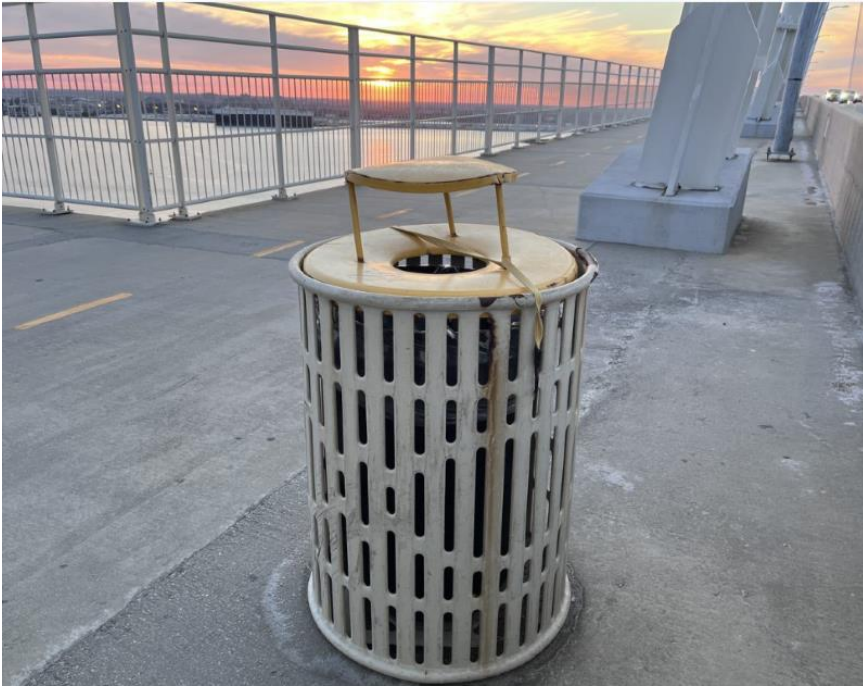
Securing Lid



Ease to Clean



Environmental Hazards: Wind



Environmental Hazards: Sun



Environmental Hazards: Freezing Conditions



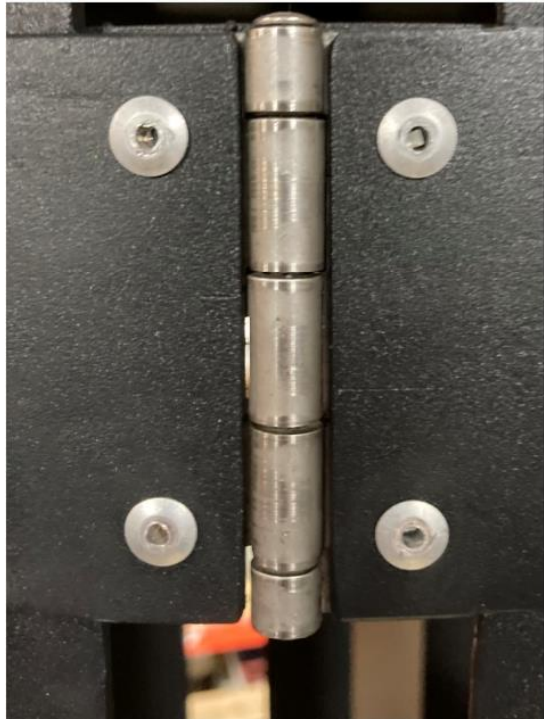
Environmental Hazards: Rust



Environmental Hazards: Sand & Dirt



Hinges & Hardware



Decals



Use & Abuse: Locks



Materials for Rough Settings



Use & Abuse: Graffiti



Photocase
Good for your eyes

knallgrün
photocase.com/3403792



Use & Abuse: Animal



Accessibility



Recycling Behavior



Today's Panelists



Alec Cooley
Senior Advisor
Busch Systems



John Lajner
*Research &
Development Manager*
Busch Systems



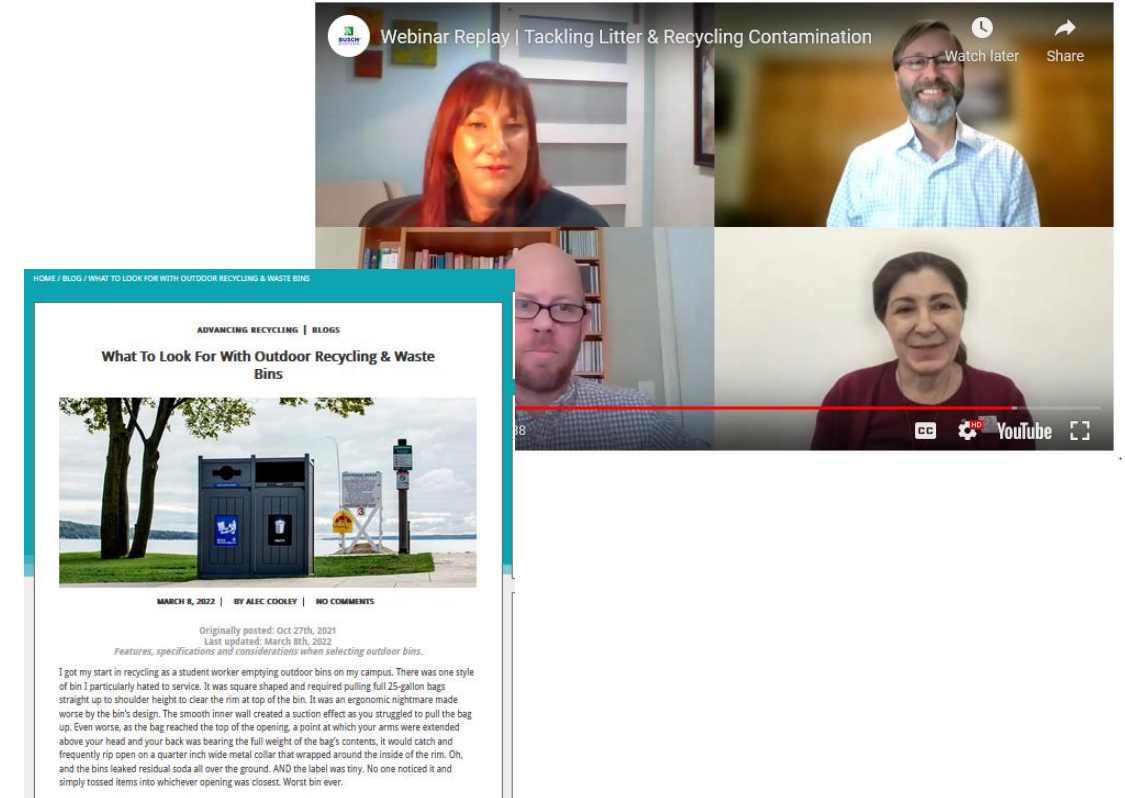
Ryan Miltimore
*Business Development
Manager*
Busch Systems



Rebecca Rourke
Account Manager
Busch Systems

Online Resources

- Recording of today's program
- Blog: detailed specs & features for outdoor bins
- Case studies from: Seattle, Des Moines, West Vancouver, Baton Rouge, Austin
- Alec's *Advancing Recycling* blog series on best practices



Visit: buschsystems.com/blog

Need Credit for CEU's?

Email Rebecca Rainey
to request a
Certificate of Attendance

rebeccarainey@buschsystems.com

Stay Tuned for Product Demonstration





